

2011
2012

FLORIDA

GATORS

Game Day Information

Florida Gators (14-8, 4-5 SEC) host the

Ole Miss Rebels (12-11, 2-8 SEC)

Sunday, February 5, 2012 * 2 pm ET

Stephen C. O'Connell Center (11,373) - Gainesville, Fla.

Game Coverage & More!

Radio:..... LIVE on WBXY-FM 99.5 "The Star" and 104.9-FM in Gainesville and .. AM930 WFXJ in Jacksonville called by Adam Schick and Brittany Davis

Internet Audio:..... LIVE thru www.GatorZone.com (FREE)

Internet Video:.....LIVE thru www.GatorVision.tv (paid)

Television:.....none

O'Connell Center Press Row:..... 352-367-1801

Tickets:..... fans who wear PINK receive \$1 general admission tickets!

..... \$5 for reserved seats; \$4 adult general admission;

..... \$2 for youth age 17 and under; FREE for UF and Santa Fe students

Family 4 Pack Sunday: 4 general admission tickets, 4 hot dogs, and 4 sodas for only \$20!

Parking:..... FREE in the O'Connell Center parking lot

Head Coaches

Florida (14-8, 4-5 SEC):..... Amanda Butler (Florida, BS '95, MS '97)

Records (overall / at UF):..... 132-84 (seventh year) / 92-62 (fifth year)

Ole Miss (12-11, 2-8 SEC):..... Renee Ladner (Ole Miss, '81)

Records (overall / at UM):..... 70-76 (fifth year) / same

Last TimeOut ... Next TimeOut

Florida - Last Game:..... Thu., February 3 at LSU: W, 73-64

Florida - Next Game:..... Thu., February 9 host Auburn: 7 pm

Ole Miss - Last Game:..... Thu., February 3 at Kentucky: L, 82-41

Ole Miss - Next Game:..... Thu., February 9 host Alabama: 6 pm CT

Sports Info/Communications Contacts

Florida:..... Kathy Cafazzo, 352-375-4683 x6133 -w / 352-316-4575 -c

..... kathyc@gators.ufl.edu / @GatorZoneWBK

..... www.GatorZone.com / CoachAmandaButler.com

Ole Miss:..... Kristen Saibini, 662-915-7896 / 662-832-3332

..... klsaibin@olemiss.edu / OleMissSports.com

Opening Tip

*Florida is playing its first home game in 17 days

*The Gators are 8-10 all-time when playing on Super Bowl Sunday

*UF has played **49 games** over the last two-plus seasons decided by 10 points or less; **11 this year**

***7 of UF's 9 SEC games have been decided by 6 points or fewer, with 8 of 9 being decided by single digits**

*Florida is ranked No. 40 in NCAA's RPI Rankings and has a strength of schedule ranking of No. 11 (last updated Jan. 29, released every Monday)

*Azania Stewart has blocked a shot in 21 consecutive games

2011-12 Florida Schedule & Results

Overall: 14-8 (home 9-3, away 3-4, neutral 2-1)

SEC: 4-5 (home 2-2, away 2-3)

| Date | UF Rank | Opponent | TV/Video | Result |
|-----------------|---------|-------------------------|------------|-----------|
| NOVEMBER | | | | |
| Fri. 11 | RV/nr | MICHIGAN (DH) | GVO | L 66-69 |
| Mon. 14 | nr/nr | STETSON | GVO | W 71-57 |
| Thu. 17 | nr/nr | #21/19 FLORIDA ST. (DH) | GVO | W 72-58 |
| Tue. 22 | nr/nr | HAMPTON | GVO | W 63-46 |
| Fri. 25 | nr/nr | vs. La Salle (1) | | W 85-74 |
| Sat. 26 | nr/nr | vs. Charlotte (1) | | W 82-73 |
| Tue. 29 | nr/nr | BELMONT | GVO | W 71-50 |
| DECEMBER | | | | |
| Fri. 2 | nr/nr | vs. #11/12 Rutgers (2) | FSFL | L 49-63 |
| Wed. 7 | nr/RV | at San Francisco | OLV | W 91-68 |
| Fri. 9 | nr/RV | at Pacific | OLV | L 73-78 |
| Tue. 20 | nr/nr | CHARLESTON SOUTHERN (3) | GVO | W 83-59 |
| Wed. 21 | nr/nr | DUQUESNE (3) | GVO | W 62-49 |
| Wed. 28 | nr/nr | SAMFORD | GVO | W 81-56 |
| JANUARY | | | | |
| Sun. 1 | nr/nr | #6 KENTUCKY* | CSS | L 56-59 |
| Thu. 5 | nr/nr | at Ole Miss* | FSFL/SUN* | W 59-55 |
| Sun. 8 | nr/nr | #rv SOUTH CAROLINA* | GVO | L 44-49 |
| Thu. 12 | nr/nr | at #19/16 Georgia* | OLV | L 55-61 |
| Sun. 15 | nr/nr | LSU* | CSS | W 62-58 |
| Thu. 19 | nr/RV | ALABAMA* | SUN | W 61-37 |
| Sun. 22 | nr/RV | at #6 Kentucky* | SEC Net | L 52-57 |
| Sun. 29 | nr/nr | at Arkansas* | OLV | L2of72-73 |
| FEBRUARY | | | | |
| Thu. 2 | nr/nr | at LSU* | OLV | W 73-64 |
| Sun. 5 | nr/nr | OLE MISS* | GVO | 2 pm |
| Thu. 9 | | AUBURN* | FSFL/SUN*+ | 7 pm |
| Sun. 12 | | at South Carolina* | ESPN2 | 5 pm |
| Thu. 16 | | at Vanderbilt* | FSN | 9 pm |
| Sun. 19 | | GEORGIA* | ESPNU | 3:30 pm |
| Thu. 23 | | MISSISSIPPI STATE* | GVO | 7 pm |
| Sun. 26 | | at Tennessee* | ESPNU | 3:30 pm |
| MARCH | | | | |
| Thu.-Sun. 1-4 | | at SEC Tournament (4) | | |

*Times are EASTERN unless noted; *Southeastern Conference game; (1) Courtyard LaGuardia Turkey Classic - Brooklyn, N.Y.; (2) vs. Rutgers - Daytona Beach, Fla. - Ocean Center; (3) Gator Holiday Classic - Gainesville, Fla.; (4) SEC Tournament - Bridgestone Arena, Nashville, Tenn.*

TV/Video Information: SUN = SunSports (state-wide in Florida); FSFL = FOX Sports Florida (state-wide); FSFL/SUN = FS Florida airs game in North/Central Florida territory, while SUN Sports in South Florida territory; SEC Net = SEC Network (Over-the-air syndication package); FSN = SportSouth, FS Southwest and SunSports; CSS = Comcast Sports South will televise; COX = Cox Sports Television; GVO and + = GatorVision Online LIVE internet video broadcast; OLV = opponent provided live internet video*

Florida's Most Recent Starting Lineup

| No. | Name | Pronunciation | P | CL | HT | Hometown (High School) | PPG | RPG | Notes |
|-----|----------------|---------------|---|------|-----|---|-----|-----|------------------------------------|
| 14 | Ndidi Madu | De-De muh-DUE | F | R-SR | 6-1 | Antioch, TN (McGavock) | 4.6 | 4.0 | season-high 12 pts at LSU |
| 13 | Azania Stewart | ah-ZANE-ee-ah | C | SR | 6-4 | Wood Green, England (Notre Dame(Va.)Acad) | 5.5 | 5.3 | 2.3 bpg; 1st doub-d of year at LSU |
| 3 | Lanita Bartley | | G | SR | 5-6 | Jacksonville, FL (Lee) | 8.5 | 5.0 | 3.7 app; 2.1 steals |
| 10 | Jaterra Bonds | ja-TEAR-ah | G | SO | 5-7 | Gainesville, FL (P.K. Yonge) | 9.0 | 2.4 | 2.6 app; 1.2 steals |
| 12 | Deana Allen | DEE-nuh | G | SR | 5-9 | Houma, LA (Ellender Memorial) | 7.6 | 5.6 | 1.6 steals; started last 7 games |

Gators Off the Bench

| | | | | | | | | | |
|----|------------------------------------|-------------------------|-----|------|------|--------------------------------------|------|-----|---------------------------------------|
| 32 | Jennifer George | | F | JR | 6-0 | Orlando, FL (Bishop Moore) | 13.1 | 9.4 | 57.0% FG; #1 SEC off-rebounder |
| 33 | Jordan Jones | | G | R-SR | 5-9 | Suwanee, GA (Collins Hill) | 12.4 | 3.7 | DNP at LSU (concussion) |
| 23 | Brittany Shine | | G | SO | 5-10 | Sacramento, CA (Sacramento) | 3.3 | 0.7 | 10.2 minutes/pg |
| 31 | Lily Svete | ss-VET-ee | F | R-SO | 6-2 | Granger, IN (Penn) | 1.7 | 1.1 | 8.9 minutes/pg |
| 20 | Andrea Vilaro Aragon | | G/F | FR | 5-10 | Barcelona, Spain (IES Joaquin Blume) | 1.7 | 1.1 | played season-long 24 min at LSU |
| | on-DREY-uh vil-R-oh air-uh-GO-ness | | | | | | | | |
| 22 | Kayla Lewis | | G/F | SO | 5-11 | Decatur, GA (Southwest DeKalb) | 6.7 | 3.0 | 3 GP; stress fractures, will redshirt |
| 4 | Charlie Needles | | G | FR | 5-6 | Highlands Ranch, CO (ThunderRidge) | -- | -- | tore right ACL Nov. 6; will redshirt |
| 15 | Viktorija Dimaite | Victoria dee-uh-MON-tae | C | FR | 6-4 | Panevezys, Lithuania (The Rock) | -- | -- | will redshirt the 2011-12 season |

Game 23: Florida hosts Ole Miss * February 5, 2012 * 2 pm ET

Florida vs. Ole Miss: By the Numbers

The Gators (14-8, 4-5 SEC):

| TEAM STATS | GP | Min | FG-FGA | Pct | 3FG-FGA | Pct | FT-FTA | Pct | Off Def | Tot | Avg | PF | FO | A | TO | Blk | Stl | Pts | Avg |
|----------------|----|------|----------|------|---------|------|---------|------|---------|-----|------|-----|----|-----|-----|-----|-----|------|------|
| Total..... | 22 | 4450 | 558-1372 | .407 | 109-379 | .288 | 259-406 | .638 | 414 527 | 941 | 42.8 | 368 | 4 | 294 | 386 | 100 | 220 | 1484 | 67.5 |
| Opponents..... | 22 | 4450 | 482-1272 | .379 | 86-319 | .270 | 258-375 | .688 | 326 489 | 815 | 37.0 | 377 | - | 236 | 414 | 79 | 183 | 1308 | 59.5 |

Individual Leaders

Scorer: Jennifer George, 13.1 ppg

Rebounder: Jennifer George, 9.4 rpg

3PT Shooter (made): Jordan Jones, 47-135 (34.8%)

Assist: Lanita Bartley, 3.2 apg

Steals: Lanita Bartley, 2.1 spg

Blocks: Azania Stewart, 2.3 bpg

The Rebels (12-11, 2-8 SEC):

| TEAM STATS | GP | Min | FG-FGA | Pct | 3FG-FGA | Pct | FT-FTA | Pct | Off Def | Tot | Avg | PF | FO | A | TO | Blk | Stl | Pts | Avg |
|----------------|----|------|----------|------|---------|------|---------|------|---------|-----|------|-----|----|-----|-----|-----|-----|------|------|
| Total..... | 23 | 4625 | 525-1415 | .371 | 95-357 | .266 | 235-376 | .625 | 372-588 | 960 | 41.7 | 344 | 4 | 301 | 422 | 88 | 184 | 1380 | 60.0 |
| Opponents..... | 23 | 4625 | 534-1441 | .371 | 100-342 | .292 | 244-373 | .654 | 386-588 | 974 | 42.3 | 364 | - | 287 | 411 | 60 | 218 | 1412 | 61.4 |

Individual Leaders

Scorer: McFarland, Valencia 13.3 ppg

Rebounder: Byrd, Nikki 9.5 rpg

3PT Shooter (made): McFerrin, Maggie 29-91 (31.0%)

Assist: McFarland, Valencia 5.1 apg

Steals: McFarland, Valencia 2.3 spg

Blocks: Byrd, Nikki 1.0 bpg

Ole Miss' Probable Starting Lineup

| Pos | ## | Name | HT | YR | PPG | RPG |
|------|----|--------------------|------|----|------|-----|
| F | 22 | Nikki Byrd | 6-4 | SR | 13.1 | 9.5 |
| F or | 21 | Danielle McCray | 6-1 | FR | 4.6 | 4.0 |
| F | 25 | Courtney Marbra | 6-1 | JR | 3.5 | 3.0 |
| G | 3 | Valencia McFarland | 5-4 | SO | 13.3 | 3.4 |
| G | 30 | Whitney Hameth | 5-10 | SR | 6.0 | 3.2 |
| G | 32 | Tia Faleru | 6-0 | FR | 4.2 | 2.5 |

Florida vs. Ole Miss

Overall (30-Game Series): UF leads 17-13
at Gainesville: 8-7; at Oxford: 9-5; at Neutral: 0-1

| | | | | | | | |
|-------|--------|-----|---------|-------|-------|-----|---------|
| L (N) | 78-101 | -23 | 3/8/79 | W (H) | 80-51 | +29 | 2/17/00 |
| L (H) | 55-61 | -6 | 2/12/86 | W (A) | 71-65 | +6 | 2/15/01 |
| L (A) | 53-62 | -9 | 1/10/87 | W (H) | 75-73 | +2 | 1/20/02 |
| L (H) | 53-77 | -24 | 1/16/88 | W (A) | 74-73 | +1 | 2/10/02 |
| L (A) | 75-88 | -13 | 2/4/89 | L (A) | 72-74 | -2 | 1/9/03 |
| L (H) | 57-63 | -6 | 2/3/90 | W (H) | 78-64 | +14 | 2/28/03 |
| L (A) | 58-65 | -7 | 2/2/91 | L (A) | 72-79 | -7 | 1/8/04 |
| L (H) | 56-59 | -3 | 1/11/92 | L (H) | 70-82 | -12 | 1/23/05 |
| W (A) | 69-65 | +4 | 1/9/93 | W (A) | 66-58 | +8 | 1/19/06 |
| W (H) | 73-65 | +8 | 1/23/94 | L (H) | 64-72 | -8 | 2/1/07 |
| W (A) | 81-77 | +4 | 1/21/95 | W (A) | 72-66 | +6 | 3/2/08 |
| W (H) | 69-48 | +21 | 2/11/96 | W (H) | 75-54 | +21 | 1/25/09 |
| W (A) | 66-58 | +8 | 2/8/97 | W (A) | 67-64 | +3 | 1/27/10 |
| W (H) | 79-60 | +19 | 2/8/98 | L (H) | 59-61 | -2 | 2/3/11 |
| W (A) | 86-63 | +23 | 2/7/99 | W (H) | 59-55 | +4 | 1/5/12 |

Additional Hoopla For Today's Game

Gators vs. Ole Miss - 2:00 PM

Presenting sponsor: Cox, Shands

*Breast Cancer Awareness Day

*Wear pink and receive \$1 general admission!

*We Play 4 Kay T-Shirt Giveaway: The first 500 fans will receive a free We Play 4 Kay pink t-shirt to show their support of Breast Cancer awareness and survivors!

*Family 4 Pack Sunday: 4 general admission tickets, 4 hot dogs, and 4 sodas for only \$20!

*Halftime: Special performance by Alexandria Aces!

*Alligator Alley: Prior to the game (12:30 p.m. to 1:45 p.m.) fans can swing by the O'Connell Center's Dance Studio to make signs, play interactive games and more!

All-Time Series Records vs. SEC Opponents (includes all meetings)

| Opponent | Overall | Under | Home | Away | Neutral | Series | Last |
|--------------------|----------------|--------------|---------------|---------------|--------------|--------------|-----------------------------|
| | W/L | Butler | W/L | W/L | W/L | Streak | Meeting |
| Alabama | 22-29 | 4-3 | 13-7 | 6-12 | 3-10 | Won 1 | W, 61-37, 1/19/12 (H) |
| Arkansas | 20-8 | 6-2 | 8-3 | 9-4 | 3-1 | Lost 1 | L-2ot: 73-72, 1/29/12 (A) |
| Auburn | 15-32 | 2-3 | 8-10 | 4-14 | 3-8 | Lost 2 | L: 73-56, 1/6/11 (A) |
| Georgia | 13-46 | 3-6 | 9-19 | 4-25 | 0-2 | Lost 1 | L: 55-61, 1/12/11 (A) |
| Kentucky | 22-23 | 1-5 | 10-9 | 9-12 | 3-2 | Lost 4 | L: 52-57, 1/22/12 (A) |
| LSU | 11-24 | 2-4 | 6-11 | 4-12 | 1-1 | Won 2 | W:73-64, 2/2/12 (A) |
| Mississippi | 17-13 | 4-1 | 7-7 | 10-5 | 0-1 | Won 1 | W, 59-55, 1/5/12 (A) |
| Mississippi St. | 21-18 | 5-1 | 11-6 | 7-11 | 3-1 | Won 5 | W: 78-63, 2/20/11 (H) |
| South Carolina | 20-9 | 6-2 | 8-6 | 10-3 | 2-0 | Lost 1 | L: 49-44, 1/8/12 (H) |
| Tennessee | 3-43 | 1-7 | 2-17 | 1-18 | 0-8 | Lost 6 | L: 92-75, 3/4/11 (N) |
| Vanderbilt | 19-30 | 1-5 | 10-11 | 6-15 | 3-4 | Won 1 | W, 74-69, 2/25/11 (A) |
| OVERALL | 183-275 | 34-38 | 92-106 | 70-131 | 21-38 | Won 1 | |

Game 23: Florida hosts Ole Miss * February 5, 2012 * 2 pm ET

Florida vs. Ole Miss: Last Two Meetings

Game 15: Florida at Ole Miss
01/05/12 7:05 p.m. at Oxford, Miss. (Tad Smith Coliseum)

VISITORS: Florida 11-4 (1-1 SEC)

| ## | Player Name | TOT-FG | | 3-PT | | REBOUNDS | | PF | TP | A | TO | BLK | S | MIN |
|-------------|-------------------------|--------|--------|--------|--------|----------|----|----|----|----|----|-----|---|-------|
| | | FG-FGA | FG-FGA | FT-FTA | FT-FTA | OF | DE | | | | | | | |
| 32 | George, Jennifer..... | f | 7-14 | 0-0 | 4-7 | 7 | 4 | 11 | 1 | 18 | 3 | 7 | 0 | 1 29 |
| 13 | Stewart, Azania..... | c | 3-9 | 0-0 | 0-0 | 3 | 1 | 4 | 1 | 6 | 0 | 2 | 1 | 2 28 |
| 03 | Bartley, Lanita..... | g | 1-2 | 0-0 | 3-4 | 2 | 0 | 2 | 1 | 5 | 3 | 2 | 0 | 1 16 |
| 10 | Bonds, Jatterra..... | g | 0-6 | 0-3 | 0-0 | 0 | 2 | 2 | 2 | 0 | 4 | 2 | 0 | 2 28 |
| 33 | Jones, Jordan..... | g | 6-9 | 4-7 | 2-3 | 0 | 4 | 4 | 2 | 18 | 0 | 2 | 0 | 1 35 |
| 12 | Allen, Deana..... | g | 1-9 | 1-2 | 2-2 | 2 | 2 | 4 | 0 | 5 | 1 | 1 | 0 | 1 24 |
| 14 | Madu, Nidii..... | g | 0-4 | 0-2 | 0-0 | 1 | 2 | 3 | 2 | 0 | 0 | 1 | 0 | 0 11 |
| 20 | Vilaro Aragonés, A..... | g | 1-3 | 0-0 | 0-0 | 2 | 2 | 2 | 2 | 2 | 1 | 1 | 0 | 1 11 |
| 23 | Shine, Brittany..... | g | 0-0 | 0-0 | 0-0 | 0 | 0 | 0 | 0 | 0 | 0 | 0 | 0 | 0 6 |
| 31 | Svete, Lily..... | g | 2-3 | 1-1 | 0-0 | 0 | 0 | 0 | 0 | 5 | 0 | 0 | 0 | 0 12 |
| TEAM..... | | | | | | 1 | 4 | 5 | | | | | | |
| Totals..... | | | 21-59 | 6-15 | 11-16 | 16 | 21 | 37 | 11 | 59 | 12 | 18 | 1 | 9 200 |

TOTAL FG% 1st Half: 14-30 46.7% 2nd Half: 7-29 24.1% Game: 35.6% DEADB
3-Pt. FG% 1st Half: 3-7 42.9% 2nd Half: 3-8 37.5% Game: 40.0% REBS
F Throw % 1st Half: 6-7 85.7% 2nd Half: 5-9 55.6% Game: 68.8% 2.1

HOME TEAM: Ole Miss 10-5 (0-2 SEC)

| ## | Player Name | TOT-FG | | 3-PT | | REBOUNDS | | PF | TP | A | TO | BLK | S | MIN |
|-------------|--------------------------|--------|--------|--------|--------|----------|----|----|----|----|----|-----|---|-------|
| | | FG-FGA | FG-FGA | FT-FTA | FT-FTA | OF | DE | | | | | | | |
| 22 | Byrd, Nikki..... | f | 5-9 | 0-0 | 3-5 | 5 | 6 | 11 | 2 | 13 | 1 | 2 | 2 | 2 34 |
| 25 | Marbra, Courtney..... | f | 3-5 | 0-0 | 0-0 | 4 | 2 | 6 | 4 | 6 | 0 | 4 | 0 | 0 27 |
| 03 | McFarland, Valencia..... | g | 5-16 | 1-5 | 2-2 | 0 | 0 | 0 | 13 | 5 | 4 | 0 | 0 | 1 31 |
| 20 | Singletary, Amber..... | g | 1-7 | 0-3 | 0-0 | 0 | 1 | 1 | 2 | 2 | 3 | 0 | 0 | 0 21 |
| 30 | Hameth, Whitney..... | g | 2-11 | 0-6 | 0-0 | 1 | 7 | 8 | 1 | 4 | 5 | 0 | 0 | 1 35 |
| 11 | Jenkins, Kenyotta..... | g | 5-8 | 0-0 | 0-0 | 5 | 5 | 10 | 2 | 10 | 0 | 1 | 3 | 1 21 |
| 14 | McFerrin, Maggie..... | g | 2-3 | 1-2 | 0-0 | 0 | 0 | 0 | 0 | 5 | 0 | 1 | 0 | 0 15 |
| 21 | McCray, Danielle..... | g | 0-0 | 0-0 | 0-0 | 0 | 2 | 2 | 0 | 0 | 1 | 0 | 0 | 0 3 |
| 23 | Laws, LaTosha..... | g | 1-4 | 0-1 | 0-0 | 0 | 1 | 1 | 3 | 2 | 1 | 3 | 0 | 2 12 |
| 42 | Jackson, Monique..... | g | 0-0 | 0-0 | 0-0 | 0 | 0 | 0 | 0 | 0 | 0 | 0 | 0 | 0 1 |
| TEAM..... | | | | | | 3 | 1 | 4 | | | | | | |
| Totals..... | | | 24-63 | 2-17 | 5-7 | 18 | 25 | 43 | 14 | 55 | 14 | 20 | 6 | 6 200 |

TOTAL FG% 1st Half: 12-33 36.4% 2nd Half: 12-30 40.0% Game: 38.1% DEADB
3-Pt. FG% 1st Half: 2-7 28.6% 2nd Half: 0-10 0.0% Game: 11.8% REBS
F Throw % 1st Half: 2-4 50.0% 2nd Half: 3-3 100% Game: 71.4% 1

Officials: Scott Yarbrough, Laura C. Morris, Jules Gallien
Technical fouls: Florida-None, Ole Miss-None. Attendance: 389
Score by Periods 1st 2nd Total
Florida..... 37 22 - 59
Ole Miss..... 28 27 - 55
Points in the paint-UF 20, UM 32. Points off turnovers-UF 24, UM 11.
2nd chance points-UF 14, UM 15. Fast break points-UF 6, UM 6.
Bench points-UF 12, UM 17. Score tied-2 times. Lead changed-1 time.
Last FG-UF 2nd-03:13, UM 2nd-00:17.
Largest lead-UF by 12 2nd-16:24, UM by 9 1st-15:31.

**Game 15 Florida 59, Ole Miss 55
Jan. 5, 2012 * Oxford, Miss. * Tad Smith Coliseum**

Jordan Jones nailed a three-pointer late, Jennifer George posted her seventh consecutive double-double and Florida defeated Ole Miss, 58-53, at Tad Smith Coliseum on Thursday evening. After Ole Miss cut Florida's lead to four points late, Jones stepped up and nailed her fourth three-pointer of the game and gave the Gators a 58-51 lead with 3:13 remaining, as Florida held on to collect its first Southeastern Conference road win of the season.

George finished with 18 points and 11 rebounds while dishing three assists, as her double-double streak of seven is tied for the sixth longest streak in program history. Jones also scored 18 points, converting 6-of-9 overall from the floor, including 4-of-7 from beyond the arc.

The Gators shot 35.6 percent overall from the floor, while Ole Miss (10-5, 0-2 SEC) hit 38.1 percent overall and just 2-of-17 from the three-point arc.

UM's Nikki Byrd led the Rebels with 13 points and 11 rebounds, while Valencia McFarland added 13 points and Kenyotta Jenkins at 10 points and 10 rebounds, helping Ole Miss out-rebound Florida, 43-37, and snap the Gator's 11 game run of winning the battle of the boards.

After Ole Miss cut Florida's halftime lead to five points, 37-32, the Gators used a 9-2 run to take a 46-34 advantage with 16:24 remaining, as Jordan Jones scored five during the span and Azania Stewart and Jennifer George both dropped in two. The Rebels responded by scoring the next eight points of the game over a 4:20 span and closed within four points, 46-42, with 11:42 on the clock. George halted the run with one free throw, but Ole Miss continued its march with an inside bucket from LaTosha Laws, as the Rebels crept within three points with 11:17 to go.

Florida had a couple chances to build on its lead, but missed chip shots inside and turned the ball over. Ole Miss couldn't take advantage and George ended both team's respective dry spells with an offensive rebound put-back with 9:07 remaining. George then converted one of two free throws and had the Gators ahead 50-44, before Florida turned up its defensive pressure and forced a shot clock violation with just under eight minutes remaining. Jones came out hot from the media timeout and nailed her second three-pointer of the game and gave Florida a 53-44 lead with 7:37 remaining. Ole Miss answered with a 5-0 run, capped by a three-point play from Nikki Byrd.

Azania Stewart stepped out and hit a 12-foot jumper, before Byrd hit two more free throws and kept the Gator lead at four points, 55-51, with 4:19 to go.

Neither team could convert offensively for the next two minutes, before Jones canned a three-pointer in front of the Gator bench and lifted UF to a 58-51 advantage with 3:13 on the clock. Maggie McFerrin scored a deep bucket with 1:46 to go and cut the lead to five with 1:46.

Lanita Bartley, who was hampered in the second half with an ankle sprain, hit one free throw with 38.8 seconds remaining and gave the Gators a 59-53 lead, but Ole Miss continued to press and Kenyotta Jenkins put back an offensive rebound and had the Rebels within four points with 17 seconds remaining. Jones had a chance to seal the game at the line, but missed the front end of a one-and-one, giving life to the Rebels, who were unable to close the gap and the Gators walked off with their first SEC road win of the year.

Florida got off to a slow start, turning the ball over three times in its first four offensive possessions, while Ole Miss jumped out to a quick 9-2 lead. The Gators managed to attempt just three shots over the opening four-plus minutes of the game, while the Rebels connected on 4-of-10 during the early span. The Rebels continued their game-opening spurt with another bucket and extended their lead to nine points. Deana Allen ended the run with a three-pointer from the left side at the 14:32 mark and the teams traded buckets, with Florida's coming from Stewart, who knocked down a 16-footer from straight away and ignited a 13-0 run over the next 5:06, as Allen, Jones and Andrea Vilaro Aragonés also scored during the stretch and gave the Gators an 18-13 lead.

Game 24: Ole Miss vs Florida
02/03/11 7 pm ET at Gainesville, FL * O'Connell Center

VISITORS: Ole Miss 10-11(3-6 SEC)

| ## | Player Name | TOT-FG | | 3-PT | | REBOUNDS | | PF | TP | A | TO | BLK | S | MIN |
|-------------|--------------------------|--------|--------|--------|--------|----------|----|----|----|----|----|-----|---|-------|
| | | FG-FGA | FG-FGA | FT-FTA | FT-FTA | OF | DE | | | | | | | |
| 22 | Byrd, Nikki..... | f | 1-1 | 0-0 | 0-0 | 1 | 1 | 2 | 3 | 2 | 0 | 0 | 0 | 0 12 |
| 25 | Marbra, Courtney..... | f | 1-5 | 0-0 | 0-0 | 3 | 6 | 9 | 1 | 2 | 1 | 0 | 0 | 0 35 |
| 01 | Nelson, Shae..... | g | 4-10 | 3-8 | 2-2 | 0 | 5 | 5 | 3 | 13 | 0 | 5 | 0 | 1 36 |
| 03 | McFarland, Valencia..... | g | 7-17 | 1-6 | 5-5 | 1 | 1 | 2 | 1 | 20 | 6 | 3 | 0 | 1 39 |
| 20 | Melson, Kayla..... | g | 3-11 | 0-1 | 0-0 | 2 | 4 | 6 | 0 | 6 | 1 | 1 | 1 | 1 22 |
| 14 | McFerrin, Maggie..... | g | 1-3 | 0-1 | 0-0 | 1 | 0 | 1 | 0 | 2 | 0 | 1 | 0 | 0 19 |
| 15 | Hope, Pa'Sonna..... | g | 6-10 | 0-0 | 2-4 | 4 | 6 | 10 | 3 | 14 | 0 | 1 | 0 | 0 29 |
| 23 | Laws, LaTosha..... | g | 0-0 | 0-0 | 0-0 | 0 | 0 | 0 | 0 | 0 | 0 | 1 | 0 | 0 4 |
| 42 | Slusher, Tori..... | g | 1-1 | 0-0 | 0-0 | 1 | 0 | 1 | 0 | 2 | 0 | 0 | 0 | 1 4 |
| TEAM..... | | | | | | 3 | 1 | 4 | | | | | | |
| Totals..... | | | 24-58 | 4-16 | 9-11 | 16 | 24 | 40 | 11 | 61 | 8 | 13 | 1 | 4 200 |

TOTAL FG% 1st Half: 13-34 38.2% 2nd Half: 11-24 45.8% Game: 41.4% DEADB
3-Pt. FG% 1st Half: 3-11 27.3% 2nd Half: 1-5 20.0% Game: 25.0% REBS
F Throw % 1st Half: 1-1 100% 2nd Half: 8-10 80.0% Game: 81.8% 1

HOME TEAM: Florida 14-10(4-6 SEC)

| ## | Player Name | TOT-FG | | 3-PT | | REBOUNDS | | PF | TP | A | TO | BLK | S | MIN |
|-------------|-----------------------|--------|--------|--------|--------|----------|----|----|----|----|----|-----|---|-------|
| | | FG-FGA | FG-FGA | FT-FTA | FT-FTA | OF | DE | | | | | | | |
| 14 | Madu, Nidii..... | f | 0-4 | 0-0 | 0-0 | 1 | 0 | 1 | 0 | 0 | 0 | 0 | 1 | 0 15 |
| 13 | Stewart, Azania..... | c | 4-6 | 0-0 | 1-2 | 2 | 6 | 8 | 1 | 9 | 3 | 0 | 2 | 1 27 |
| 03 | Bartley, Lanita..... | g | 2-5 | 1-3 | 5-8 | 1 | 1 | 2 | 4 | 10 | 1 | 1 | 0 | 2 27 |
| 10 | Bonds, Jatterra..... | g | 2-9 | 1-5 | 0-0 | 0 | 1 | 1 | 2 | 5 | 3 | 3 | 0 | 3 30 |
| 33 | Jones, Jordan..... | g | 3-9 | 2-8 | 0-0 | 1 | 2 | 3 | 1 | 8 | 0 | 0 | 0 | 1 32 |
| 12 | Allen, Deana..... | g | 1-5 | 1-2 | 0-0 | 0 | 1 | 1 | 0 | 3 | 0 | 0 | 0 | 1 15 |
| 23 | Shine, Brittany..... | g | 5-9 | 2-4 | 0-0 | 1 | 1 | 2 | 0 | 12 | 2 | 1 | 0 | 0 16 |
| 24 | Young, Deaundra..... | g | 0-5 | 0-0 | 1-2 | 0 | 2 | 2 | 0 | 1 | 0 | 1 | 0 | 0 9 |
| 31 | Svete, Lily..... | g | 0-1 | 0-0 | 0-0 | 0 | 1 | 1 | 1 | 0 | 0 | 1 | 0 | 0 4 |
| 32 | George, Jennifer..... | g | 5-5 | 0-0 | 1-1 | 5 | 4 | 9 | 1 | 11 | 0 | 2 | 0 | 1 25 |
| TEAM..... | | | | | | 2 | 2 | | | | | | | |
| Totals..... | | | 22-58 | 7-22 | 8-13 | 13 | 19 | 32 | 11 | 59 | 9 | 9 | 4 | 9 200 |

TOTAL FG% 1st Half: 10-28 35.7% 2nd Half: 12-30 40.0% Game: 37.9% DEADB
3-Pt. FG% 1st Half: 3-11 27.3% 2nd Half: 4-11 36.4% Game: 31.8% REBS
F Throw % 1st Half: 1-2 50.0% 2nd Half: 7-11 63.6% Game: 61.5% 4

Officials: Mary Day, Felicia Grinter, Denise Brooks
Technical fouls: Ole Miss-None, Florida-None. Attendance: 731
Score by Periods 1st 2nd Total
Ole Miss..... 30 31 - 61
Florida..... 24 35 - 59
Points in the paint-UM 26, UF 28. Points off turnovers-UM 16, UF 17.
2nd chance points-UM 14, UF 15. Fast break points-UM 8, UF 10.
Bench points-UM 18, UF 27. Score tied-3 times. Lead changed-0 times.
Last FG-UM 2nd-00:37, UF 2nd-00:06.
Largest lead-UM by 12 2nd-06:21, UF None.

Game 24 Florida 61, Ole Miss 59

February 3, 2011 * Gainesville, Fla. * Stephen C. O'Connell Center
Florida trailed by 12 points with 6:12 remaining, but rallied and tied the score with 63 seconds left, however, it wasn't enough as Ole Miss hung on for the 61-59 win in the O'Connell Center Thursday evening. The Rebels converted 3-of-4 free throws in the final 10.1 seconds to secure the victory and snap their two-game losing streak, while halting the Gators' two-game winning run.

The Gators lost the rebounding battle for only the fifth time this season and it has cost them every time, as the Rebels held the 40-32 advantage. Ole Miss, which collected 16 offensive boards, was led by freshman Valencia McFarland, who scored a game-high 20 points, hitting 5-of-5 from the free throw line. Fellow freshman Pa'Sonna Hope collected a game-high 10 rebounds along with 14 points, the final three coming in the last 37 seconds of the game.

Brittany Shine led Florida with 12 points, as she hit 5-of-9 from the floor. Jennifer George added 11 points on 5-of-5 shooting with a team-best nine rebounds for the Gators, who committed a season-low nine turnovers but shot just 37.0 percent from the floor, including a 7-of-22 effort from the 3-point arc. Lanita Bartley chipped in 10 points for Florida.

Jatterra Bonds stole the in-bounds pass, dribbled the length of the court and converted the layup to begin the second half, as she cut Florida's halftime deficit to four, 30-26. UM hit one free throw before the Gator's seventh turnover of the game resulted in another field goal for the guests, who took a 33-26 lead. George put back an offensive rebound for the Gators, before Shine knocked down her second three-pointer of the contest and had Florida within two points, 33-31, with 15:24 remaining. Ole Miss crashed the offensive boards and eventually cashed with a pair of free throws and another short bucket to take a six-point lead with 13:12 on the clock. Bartley came right back by hitting UF's fifth trey of the contest and had the Gators within three, 37-34. UF had a few more chances to cut into the deficit, but couldn't connect from a couple of long range attempts and as the Gators crashed the offensive boards hard, UM collected a miss and tossed the ball down the court for an easy two. The Rebels extended their lead to six with a driving layup from Shae Nelson, but George came back with a bucket. After another field goal from Valencia McFarland, Jordan Jones sank a three-pointer and had UF back within three, 43-40, with 9:30 to play. Nelson answered with a trey for UM and Pa'Sonna Hope sank the next two field goals that put the Gators in a 10-point hole with 7:12 remaining. McFarland made it a 9-0 run after her 5-footer and gave UM a 52-40 lead with 6:12 on the clock.

George finally ended the spree with an athletic bucket inside, but McFarland struck again. Bartley hit one free throw, Stewart connected on one from inside and George hit another move for a bucket giving UF consecutive scores for only the second time in the half, and brought the Gators within seven, 54-47, with 4:06. Bartley drove the lane and missed the bucket, but connected on two free throws with 3:02 on the clock and UF crept closer, 54-49. After a defensive stop, Stewart put back a tough offensive rebound and the Gators were within three, 54-51 with 2:24 to go. McFarland then added two free throws to stop UF's 9-0 run, but Bartley hit one from the charity stripe and the Gators cut the deficit to four, 56-52 with 1:33 remaining. Jones then came up with a steal on the inbounds and fed George, who completed the 3-point play with 1:19 on the clock and had the Gators within one, 56-55. Bartley then picked Shae Nelson's pocket and dribbled the length of the court and put up a short shot, which she missed but made one of two free throws and tied the game with 63 seconds remaining. UM came back and Hope found herself open under the basket for a two-footer with 37 seconds remaining and gave UM a 58-56 lead. The Gators worked their next possession and Bonds' three-point attempt was off the mark. Nelson collected the rebound and was immediately fouled. Nelson calmly hit both ends of the one-and-one with 10.1 seconds on the clock to give the Rebels a 60-56 lead. Deana Allen stepped up and nailed a three-pointer that brought the Gators back within one, 60-59, with 4.5 seconds remaining. The Gators immediately fouled on the in-bounds and Hope hit the first, missed the second and George came up with the rebound, but Bartley's shot from three-quarter's of the court length was short.

Game 23: Florida hosts Ole Miss * February 5, 2012 * 2 pm ET

UF's: Last Game

Game 22: Florida at LSU
02/02/12 6:00 pm at PMAC (Baton Rouge, LA)

VISITORS: Florida 14-8 (4-5)

| ## | Player Name | TOT-FG | | | 3-PT | | | REBOUNDS | | | PF | TP | A | TO | BLK | S | MIN |
|----|---------------------|--------|--------|--------|--------|--------|--------|----------|----|-----|----|----|---|----|-----|----|-----|
| | | FG-FGA | FG-FGA | FT-FTA | FG-FGA | FG-FGA | FT-FTA | OF | DE | TOT | | | | | | | |
| 14 | Madu, Ndidi | f | 5-11 | 2-4 | 0-2 | 0 | 1 | 1 | 12 | 0 | 1 | 1 | 1 | 1 | 1 | 25 | |
| 13 | Stewart, Azania | c | 4-7 | 0-0 | 4-4 | 8 | 2 | 10 | 4 | 12 | 0 | 3 | 2 | 1 | 29 | | |
| 03 | Bartley, Lanita | g | 3-6 | 1-3 | 5-6 | 4 | 3 | 7 | 4 | 12 | 2 | 2 | 0 | 1 | 33 | | |
| 10 | Bonds, Jatterra | g | 4-8 | 0-4 | 1-2 | 0 | 3 | 3 | 2 | 9 | 5 | 2 | 0 | 2 | 35 | | |
| 12 | Allen, Deana | g | 4-7 | 1-1 | 0-0 | 1 | 3 | 4 | 3 | 9 | 2 | 5 | 0 | 0 | 19 | | |
| 20 | Vilaro Aragonés, A. | | 2-7 | 1-5 | 0-3 | 0 | 1 | 1 | 0 | 5 | 1 | 1 | 0 | 4 | 24 | | |
| 23 | Shine, Brittany | | 0-2 | 0-2 | 2-4 | 1 | 1 | 2 | 1 | 2 | 1 | 2 | 0 | 0 | 9 | | |
| 31 | Svete, Lily | | 1-1 | 1-1 | 0-0 | 0 | 1 | 1 | 1 | 3 | 1 | 1 | 0 | 0 | 7 | | |
| 32 | George, Jennifer | | 4-5 | 0-0 | 1-2 | 1 | 1 | 2 | 3 | 9 | 0 | 1 | 1 | 2 | 19 | | |
| | TEAM | | | | | 1 | 3 | 4 | | | | 2 | | | | | |
| | Totals | | 27-54 | 6-20 | 13-23 | 16 | 19 | 35 | 19 | 73 | 12 | 20 | 4 | 11 | 200 | | |

| | | | | | | | | |
|---------------------|-------|-------|-----------|-------|-------|-------|-------|-------|
| TOTAL FG% 1st Half: | 14-29 | 48.3% | 2nd Half: | 13-25 | 52.0% | Game: | 50.0% | DEADB |
| 3-Pt. FG% 1st Half: | 4-10 | 40.0% | 2nd Half: | 2-10 | 20.0% | Game: | 30.0% | REBS |
| F Throw % 1st Half: | 1-3 | 33.3% | 2nd Half: | 12-20 | 60.0% | Game: | 56.5% | 4 |

HOME TEAM: LSU 14-8 (4-5)

| ## | Player Name | TOT-FG | | | 3-PT | | | REBOUNDS | | | PF | TP | A | TO | BLK | S | MIN |
|----|--------------------|--------|--------|--------|--------|--------|--------|----------|----|-----|----|----|---|----|-----|---|-----|
| | | FG-FGA | FG-FGA | FT-FTA | FG-FGA | FG-FGA | FT-FTA | OF | DE | TOT | | | | | | | |
| 22 | JONES, Courtney | f | 3-10 | 0-1 | 4-4 | 5 | 1 | 6 | 1 | 10 | 2 | 2 | 0 | 1 | 31 | | |
| 25 | BLACK, Swayze | f | 0-1 | 0-0 | 0-0 | 1 | 1 | 2 | 1 | 0 | 0 | 0 | 0 | 2 | 10 | | |
| 55 | BARRETT, LaSondra | f | 1-6 | 0-1 | 3-4 | 2 | 6 | 8 | 3 | 5 | 1 | 6 | 0 | 2 | 31 | | |
| 05 | KENNEY, Jeanne | g | 3-7 | 2-5 | 2-2 | 0 | 1 | 1 | 5 | 10 | 4 | 8 | 0 | 1 | 29 | | |
| 10 | WEBB, Adrienne | g | 7-15 | 1-5 | 4-5 | 2 | 2 | 4 | 2 | 19 | 0 | 2 | 0 | 3 | 35 | | |
| 03 | LUTLEY, Bianca | | 1-3 | 1-2 | 0-2 | 1 | 1 | 2 | 1 | 3 | 4 | 1 | 0 | 1 | 18 | | |
| 12 | FORTHAN, Krystal | | 1-6 | 0-0 | 1-1 | 2 | 0 | 2 | 1 | 3 | 0 | 1 | 0 | 0 | 10 | | |
| 23 | McKINNEY, Shanece | | 1-2 | 0-0 | 0-0 | 2 | 1 | 3 | 1 | 2 | 1 | 0 | 0 | 0 | 14 | | |
| 24 | PLAISANCE, Theresa | | 2-3 | 1-1 | 1-1 | 0 | 1 | 1 | 1 | 6 | 1 | 1 | 0 | 0 | 8 | | |
| 35 | TURNBOW, Taylor | | 3-4 | 0-0 | 0-0 | 1 | 1 | 2 | 3 | 6 | 1 | 1 | 0 | 1 | 14 | | |
| | TEAM | | | | | 3 | 2 | 5 | | | | | | | | | |
| | Totals | | 22-57 | 5-15 | 15-19 | 19 | 17 | 36 | 19 | 64 | 14 | 22 | 0 | 11 | 200 | | |

| | | | | | | | | |
|---------------------|------|-------|-----------|-------|-------|-------|-------|-------|
| TOTAL FG% 1st Half: | 9-21 | 42.9% | 2nd Half: | 13-36 | 36.1% | Game: | 38.6% | DEADB |
| 3-Pt. FG% 1st Half: | 1-4 | 25.0% | 2nd Half: | 4-11 | 36.4% | Game: | 33.3% | REBS |
| F Throw % 1st Half: | 5-7 | 71.4% | 2nd Half: | 10-12 | 83.3% | Game: | 78.9% | 1 |

Officials: Beverly Roberts, Troy Winders, Amy Bonner
Technical fouls: Florida-None, LSU-None. Attendance: 5295

| Score by Periods | 1st | | 2nd | | Total |
|------------------|-----|-----|-----|-----|-------|
| | 1st | 2nd | 1st | 2nd | |
| Florida | 33 | 40 | - | - | 73 |
| LSU | 24 | 40 | - | - | 64 |

Points in the paint-UF 30, LSU 22. Points off turnovers-UF 26, LSU 18.
2nd chance points-UF 14, LSU 11. Fast break points-UF 0, LSU 4.
Bench points-UF 19, LSU 20. Score tied-0 times. Lead changed-0 times.
Last FG-UF 2nd-01:04, LSU 2nd-00:28.
Largest lead-UF by 14 2nd-17:16, LSU None.

Game 22: Florida 73, LSU 64

Feb. 2, 2012 * Baton Rouge, La. * Pete Maravich Center

Azania Stewart notched her first double-double of the season, Ndidi Madu scored a season-high 12 points and Florida defeated LSU, 73-64, at the Pete Maravich Center on Thursday evening for its first win in Baton Rouge since Jan. 21, 1996. The Gators (14-8, 4-5 SEC), who led wire to wire against the Lady Tigers, earned just their fourth-ever victory in Baton Rouge, halting an eight-game slide in the Maravich Center. Thursday's win capped a tough three-game SEC road trip for Florida, which was coming off a heartbreaking 73-72 double-OT loss at Arkansas.

Against the Tigers, the Gators stepped up and answered each time LSU cut their lead to six points, the last time coming with 4:15 remaining in the game as the Tigers were in the midst of a 6-2 run. Florida responded with a 6-0 spurt, with field goals from Jennifer George, Jatterra Bonds and Stewart, who also was big on LSU's next offensive possession, as she blocked two shots, marking the 21st consecutive game she has swatted at least one.

LSU scored the next two points of the game and cut Florida's lead to seven points, 64-57, with 2:41 remaining, but Lanita Bartley came through with a tough driving layup. LSU star LaSondra Barrett netted her first field goal of the game, but Bartley answered again with two free throws, before Stewart snatched an airball from a teammate and put it in as the shot clock was winding down, as she collected her season-high 10th rebound to accompany her 12 points that resulted in the sixth double-double of her career. The points also gave Florida a 70-59 lead with 64 seconds remaining and the Gators hit 3-of-4 free throws to seal the victory.

Jordan Jones missed Thursday's game because of a concussion incurred during UF's loss on Sunday. Florida came out a bit cold in the second half, hitting just 1-of-7 to start after converting 48.3 percent in the opening 20 minutes, but still held a 40-30 lead six minutes into the period. The Gator's cold spell continued with 2-for-11 from the floor at the 11:57 mark of the game, but they began to slowly heat up, converting 11 of their final 14 shots of the game to hit 50 percent (27-54) overall, as well as 52 percent (13-25) in the second half.

Stewart scored 10 of her team-high tying 12 points in the second half, while Madu was the star of the first, when she scored all 12 of her season-high effort, nailing 5-of-7 from the floor during those opening 20 minutes when Florida found itself in foul trouble.

Lanita Bartley added 10 of her 12 points in the second half, while Bonds dished a game-high five assists with nine points and Andrea Vilaro Aragonés collected a career-best and game-high four of UF's 11 steals.

Less than eight minutes into the game, three Gators had been whistled for two personal fouls each, but that didn't stop Florida from staying focused and maintaining a lead throughout the entire first half, taking a 33-24 advantage into the locker room. Deana Allen, a native of Houma, La., located 58 miles outside of Baton Rouge, picked up two fouls in the first 1:58 of the game and an already shorten Gator bench got leaner as Allen had to come out of the game to prevent even more foul trouble. Florida missed its first four shots from the floor before Madu knocked down a 15-footer. Stewart followed with a bucket inside, taking a great pass from Vilaro Aragonés with the shot clock winding down and Florida held the early lead. Bianca Lutley knocked down a three-pointer for LSU, shortly before Bartley was whistled for her second personal at the 15:22 mark, when two Gator seniors starters were forced to the bench with foul trouble. George powered up a short shot, but LSU countered with one from Taylor Turnbow and the Gator's lead remained at one. After Bonds converted a driving layup, George, who is UF's leading scorer and rebounder, collected her second foul at the 12:08 mark and went to the pine.

LSU took advantage of George's foul by knocking down two free throws and were back within one point. Madu stepped up again and hit a mid-range jumper before nailing the third three-pointer of her career and gave Florida a 13-7 lead. LSU scored again, before Bonds completed a three-point play and gave the Gators a seven-point lead with 9:11 on the clock. The teams traded scores for the next minute, with Madu knocking down a 15-footer for the Gators. With Florida holding a four-point advantage, the Gators used a 7-0 spurt over a 1:14 span thanks to jumpers from Bonds, who nailed one with her toe on the three-point arc, Madu with her second try of the game and Vilaro Aragonés, and Florida held a 25-14 lead with 6:35 remaining in the first half. LSU countered by scoring the next six points of the game, as Florida was carless with the ball and that led to a pair of uncontested Tiger layups. Lily Svete halted the run with a three-pointer. Adrienne Webb followed with a short jumper, but Vilaro Aragonés nailed a 3-pointer on a dish from Svete that gave Florida a 31-22 lead with 1:40 remaining in the half. The teams traded baskets to end the period, as Bartley capped the frame's scoring with a driving layup with 24 seconds left.

By George, I think She's Got It!



Junior Jennifer George is having a breakout season and is a big reason for Florida's success this year.

The undersized post player listed at 6-feet tall is leading the Gators in scoring (13.1 ppg), rebounding (9.4 rpg) and field goal percentage (57.0%), while ranking second for blocked shots (37).

Compared to Last Year:

- *Her scoring average is more than DOUBLE that of last year's (6.8 ppg);
- *Her rebounding average is close to double that of last year's (5.6 rpg);
- *She's shooting more accurately than last year (54.1%);
- *She's averaging 8 more minutes of playing time (19.4 mpg);
- *She has TRIPLED the number of double-doubles she compiled in her first two years (4);

Quick Work ...

*thru the first 17 games this year, George had already equalled last year's 33-game total for scoring (239 points) and needed just 18 games to pass her season total for offensive rebounds (84)

Want More on George?

- *She ranks TIED-No. 4 in the nation for double-doubles (12);
- *Ranks No. 7 in the nation for field goal percentage (57.0%);
- *Her run of 9 consecutive double-doubles tied for the fourth-longest in UF history;
- *Her career field goal percentage (55.2%) is currently TIED as the fourth highest in program history;
- *She already ranks No. 7 in career blocked shots (119);

In the SEC, George Ranks:

- *No. 1 doubles-doubles (SEC games, T-1 in all games)
- *No. 1 offensive rebounds (all games, 2 in SEC)
- *No. 2 rebounding (SEC games, 3 in all games)
- *No. 3 defensive rebounds (all games, 4 in SEC games)
- *No. 3 field goal percentage (all games & in SEC)
- *No. 3 blocked shots (all games, 5 in SEC games)
- *No. 9 in scoring (all games & in SEC)

Game 23: Florida hosts Ole Miss * February 5, 2012 * 2 pm ET

Opening Tip-Off

Florida returns to the friendly confines of the O'Connell Center, where the team has logged a 9-3 record this year and has won its last two games.

The Gators last appearance in Gainesville was back on January 19th - **17 days ago** - when the squad posted an impressive 61-37 victory against Alabama after earning a 62-58 win over LSU on Jan. 15.

Unfriendly Road Ends with a Historic Win

The Gators are coming off a three-game SEC road swing. Florida lost a tough 57-52 decision at No. 6 Kentucky on Sunday, January 22nd and a 73-72 double-overtime setback at Arkansas on Jan. 29, but capped the trip with a 73-64 victory at LSU where the Gators earned their first win since January 21, 1996.

Sunday Slump

The Gators are 4-1 when playing on Thursdays this year (3-1 in SEC games), but just 1-4 on Sunday. Florida's lone Sunday special win was on Jan. 15 at home against LSU.

Hello, Again!

The 2011-12 season marks the beginning of new rotation for the SEC's 16-game schedule, with each team still playing the other 11 schools once, while keeping a home-and-home series with its 'natural geographic rival' (UF's is **Georgia**). Florida's four other games will be home-and-home series against **Kentucky, South Carolina, LSU** and **Ole Miss**.

Battle of the Best Boarders

Two of the SEC's top three rebounders collide on the hardwood Sunday when UM's **Nikki Byrd** and UF's **Jennifer George** take the court. Byrd leads the SEC with 9.5 rebounds per game, with George tied for second with Tennessee's Glory Johnson at 9.4 rpg.

George leads the SEC (all games) with 4.2 offensive rebounds per game, while Byrd ranks second with 3.8 per game.

UF vs. UM: The Series

The Gators hold a 17-13 edge in the 29-game series against the Rebels, including the January 5th meeting that Florida won 59-55.

The Gators have won four of the last five against the Rebels.

Eleven of the last 14 games in the series **have been decided by single digits**, including six of the last seven meetings.

Team Ties

UF's **Amanda Butler** and UM's **Renee Ladner** are two of the three SEC head coaches who have returned to their alma mater where they also played collegiate basketball - and the only two who actually suited up for the current team (Alabama's **Wendell Hudson** graduated in 1973 and starred for the Crimson Tide's men's basketball team).

Butler and Ladner both were hired by **Carol Ross** (a former UF and UM head coach) for their first collegiate coaching positions ... with both wearing the Orange & Blue in their inaugural assistant coaching jobs.

Butler was an assistant coach at UF from 1995-97, while Ladner worked with the Gators from 2000-02.

More Team Ties

Also on the Lady Rebels sideline includes former UF assistant coach **Jocelyn McGilberry**

Quick Number Watch

Games

***Lanita Bartley**'s next start will be the 50th of her career

***Jordan Jones** had started 43 consecutive games prior to missing the Feb. 2 game at LSU

***Jordan Jones** has started 112 career games (of 118 played overall; 81 starts in 86 games at UF)

Double-Figures

***Jordan Jones** has 62 career double-figure scoring games; 13 this year

***Jennifer George** has a team-leading 16 double-figure scoring games this year

***Jaterra Bonds**' next double-figure scoring game will be her 10th this year

Points

***Deana Allen** is 7 points shy of her 400th career point

Rebounds

***Deana Allen** is 2 rebounds shy of her 250th career rebound

Assists

***Deana Allen** is 3 assists shy of the 100th of her two-year UF career

***Lanita Bartley** is 11 assists shy of the 200th of her two-year UF career

Steals

***Jordan Jones** is 1 steal shy of the 150th of her career (and her 100th at UF)

Blocks

***Azania Stewart** is 15 blocks shy of her 200th career blocked shot

***Jennifer George** needs 2 more blocks to tie Tammy Jackson for sixth all-time at UF

Free Throws

***Andrea Vilaro Aragones** is 0-3 from the line in her young career (all 3 attempts at LSU Feb. 2)

***Jennifer George** is 1 made free throw shy of her 150th career free throw

Shooting

***Azania Stewart**'s career field goal percentage of 55.2% is TIED for the third-highest in UF history

***Jennifer George**'s career field goal percentage of 55.2% is TIED for the third-highest in UF history

(1989-90), as well as **Margie (Brinza) Gill**, who began working with the Gators as a student manager in 1991 and continued through the 2002 season as the Administrative Assistant to Carol Ross. During that time, **Amanda Butler** was an assistant coach at UF. Brinza is now Ole Miss' Coordinator of Basketball Operations.

Scouting the Rebels

Sophomore Valencia McFarland contributes a team-leading 13.2 points and 5.1 assists per game, the third-best mark in the SEC.

Senior forward Nikki Byrd, who missed Ole Miss' most recent game because of an injury, averages 13.1 points and 9.5 rebounds per game.

Fans Get their Money's Worth!

Florida has played **49 games** over the last two-plus seasons with outcomes decided by 10 points or less, posting a 26-23 record in those tight ballgames.

11 games fit into that category this year, when UF has posted a 4-7 record.

7 of UF's nine SEC games this season have been decided by six points or less, with 8 of 9 by decided by single digits.

Twenty-three of UF's program-record 35 games during the 2010-11 season were decided by 10 points or fewer, with 16 being six-point differences - including the final two of the season. The Gators were 14-9 in games decided by 10 points or less in 2010-11.

During the 2009-10 season, the Gators played 15 games decided by fewer than 10 points and posted an 8-7 in those outings.

Gators Picked to Finish in Top Half of SEC

Florida was picked in the preseason to finish fifth and sixth in the SEC by the league's coaches and media in the polls, respectively.

In each of the previous four years under head coach **Amanda Butler**, Florida has at least met preseason expectations, exceeding them on three occasions.

Avengers

Florida is 6-for-9 this season in avenging losses from last year when the Gators finished 20-15, turning the table in its favor against Florida State, Hampton,

UF on Super Bowl Sunday

Overall Record: 8-10 (Home: 5-3 * Away: 3-7)

| Super Bowl | Date | Super Bowl Outcome | Gator Outcome |
|------------|---------------|---------------------------------|--|
| XX | Jan. 26, 1986 | Chicago 46, New England 10 | Alabama 82, Florida 63 (A) |
| XXIII | Jan. 31, 1988 | Washington 42, Denver 10 | Vanderbilt 84, Florida 62 (A) |
| XXVI | Jan. 26, 1992 | Washington 37, Buffalo 24 | Vanderbilt 89, Florida 82 (A) |
| XXVIII | Jan. 30, 1994 | Dallas 30, Buffalo 13 | Florida 74, Arkansas 69 (H) |
| XXX | Jan. 28, 1996 | Dallas 27, Pittsburgh 17 | Vanderbilt 74, Florida 60 (A) |
| XXXIII | Jan. 31, 1999 | Denver 34, Atlanta 19 | Florida 78, Vanderbilt 69 (H) |
| XXXIV | Jan. 30, 2000 | St. Louis 23, Tennessee 16 | Florida 79, South Carolina 63 (H) |
| XXXV | Jan. 28, 2001 | Baltimore 34, N.Y. Giants 7 | Florida 91, South Carolina 53 (H) |
| XXXVI | Feb. 3, 2002 | New England 20, St. Louis 17 | South Carolina 69, Florida 59 (H) |
| XXXVII | Jan. 26, 2003 | Tampa 48, Oakland 21 | Geo. Washington 74, UF 55 (A) |
| XXXVIII | Feb. 1, 2004 | New England 32, Carolina 29 | Florida 92, Vanderbilt 83 (A) |
| XXXIX | Feb. 6, 2005 | New England 24, Philadelphia 21 | Alabama 77, Florida 66 (A) |
| XL | Feb. 5, 2006 | Pittsburgh 21, Seattle 10 | Florida 68, Kentucky 61 (A) |
| XLI | Feb. 4, 2007 | Indianapolis 29, Chicago 17 | Kentucky 84, Florida, 74 (A) |
| XLII | Feb. 3, 2008 | N.Y. Giants 17, New England 14 | LSU 85, Florida 71 (H) |
| XLIII | Feb. 1, 2009 | Pittsburgh 27, Arizona 23 | Florida 94, Arkansas 78 (A) |
| XLIV | Feb. 7, 2010 | New Orleans 31, Indianapolis 17 | Florida 80, Mississippi State 78 - 2OT (H) |
| XLV | Feb. 6, 2011 | Green Bay 31, Pittsburgh 25 | Vanderbilt 103, Florida 97 - 2OT (H) |
| XLVI | Feb. 3, 2012 | New England vs. N.Y. Giants | Florida vs. Ole Miss |

Are You Ready for Some ... Basketball!

Sunday's game against Ole Miss marks the 14th consecutive year Florida has played on Super Bowl Sunday. The Gators sport an 8-10 all-time record when playing on Super Bowl Sunday, including a 5-3 mark at home ... UF is 5-3 when the team representing the AFC wins the title and 3-7 when the NFC team wins.

This season marks the 30th time - and 10th consecutive year - that at least one former Gator player will be in the championship game. Five former Florida players involved. **Aaron Hernandez, Brandon Spikes, Gerard Warren** and **Jermaine Cunningham** (Cunningham is on injured reserve) look to give the Patriots their fourth Super Bowl while **Justin Trattou** looks to gain a ring and add to the Giants total of four Super Bowl titles. Thirteen Gators have walked away as a Super Bowl Champions, winning a combined 19 rings.

**Associated Press Poll
January 30, 2012**

| | | |
|------------|-----------------------|------------|
| 1. | Baylor (40)..... | 1000 |
| 2. | Notre Dame..... | 960 |
| 3. | Connecticut..... | 916 |
| 4. | Stanford..... | 882 |
| 5. | Duke..... | 834 |
| 6. | Kentucky..... | 808 |
| 7. | Miami (FL)..... | 738 |
| 8. | Tennessee..... | 693 |
| 9. | Maryland..... | 635 |
| 10. | Green Bay..... | 615 |
| 11. | Ohio St..... | 614 |
| 12. | Delaware..... | 520 |
| 13. | Rutgers..... | 516 |
| 14. | Louisville..... | 501 |
| 15. | Purdue..... | 407 |
| 16. | Nebraska..... | 400 |
| 17. | Georgetown..... | 378 |
| 18. | Texas A&M..... | 352 |
| 19. | Penn St..... | 221 |
| 20. | Gonzaga..... | 217 |
| 21. | Georgia..... | 154 |
| 22. | BYU..... | 136 |
| 23. | North Carolina..... | 94 |
| 24. | Georgia Tech..... | 79 |
| 25. | Texas Tech..... | 70 |

Others Receiving Votes: St. Bonaventure 61, DePaul 53, **South Carolina 48**, California 18, Kansas St. 13, **Arkansas 12**, Princeton 11, St. John's 9, Fla Gulf Coast 8, Oklahoma 6, San Diego St. 5, Kansas 5, Fresno St. 4, UTEP 4, **Vanderbilt 2**, Michigan St. 1

**ESPN-USA Today Coaches Poll
January 31, 2012**

| | | |
|-----------|--------------------------|------------|
| 1 | Baylor (31)..... | 775 |
| 2 | Notre Dame..... | 742 |
| 3 | Connecticut..... | 712 |
| 4 | Stanford..... | 684 |
| 5 | Kentucky..... | 642 |
| 6 | Duke..... | 621 |
| 7 | Miami (Fla.)..... | 588 |
| 8 | Tennessee..... | 528 |
| 9 | Wisconsin-Green Bay..... | 501 |
| 10 | Maryland..... | 493 |
| 11 | Ohio State..... | 454 |
| 12 | Louisville..... | 441 |
| 13 | Delaware..... | 382 |
| 14 | Rutgers..... | 372 |
| 15 | Georgetown..... | 338 |
| 16 | Texas A&M..... | 333 |
| 17 | Purdue..... | 244 |
| 18 | Nebraska..... | 226 |
| 19 | Gonzaga..... | 219 |
| 20 | Georgia..... | 182 |
| 21 | Penn State..... | 154 |
| 22 | Georgia Tech..... | 104 |
| 23 | DePaul..... | 86 |
| 24 | North Carolina..... | 53 |
| 25 | Kansas..... | 45 |

Others receiving votes: Texas Tech 30; **Vanderbilt 23**; St. Bonaventure 19; Middle Tennessee 15; Florida Gulf Coast 14; **South Carolina 13**; California 12; Brigham Young 8; Michigan State 6; Princeton 3; Texas-El Paso 3; UNLV 3; Fresno State 2; Kansas State 2; St. John's 2; South Florida 1.

Florida Week-by-Week in the 2011-12 National Polls

| <u>Week</u> | <u>AP</u> | <u>Coaches</u> |
|-------------|-----------|----------------|
| Preseason | RV (6/7) | nr (6/7) |
| Nov. 14 | nr (6/8) | nr (6/7) |
| Nov. 21 | nr (5/8) | nr (6/8) |
| Nov. 28 | nr (5/9) | nr (5/6) |
| Dec. 5 | nr (5/9) | RV (5/6) |
| Dec. 12 | nr (5/9) | nr (5/7) |
| Dec. 19 | nr (5/9) | nr (5/8) |
| Dec. 26 | nr (5/8) | nr (5/8) |
| Jan. 2 | nr (5/8) | nr (5/7) |
| Jan. 9 | nr (6/8) | nr (5/7) |
| Jan. 16 | nr (5/7) | RV (5/7) |
| Jan. 23 | nr (4/9) | nr (4/7) |
| Jan. 30 | nr (4/7) | nr (4/6) |

(opponents in Top-25 / total receiving votes)

Florida in the National Rankings

- *All-time weeks in AP poll: 132
- *Highest AP ranking: 5th, Nov. 24, 1997
- *Highest Coaches ranking: 5th, 11/25/1997
- *First AP ranking: 19th, Dec. 26, 1983
- *Last AP rank: 22nd, final 2008-09 poll
- *Last Coaches rank: 23rd, final 2008-09 poll

BOLDFACE indicates 2011-12 opponent

Charlotte, LSU (twice) and Alabama, but falling to Kentucky twice and at Georgia.

Gator Watch

Junior forward **Jennifer George** continues to lead UF in scoring (13.1 ppg) and rebounding (9.4 rpg), an effort that also **is tied for second in the SEC** (all games and No. 2 for SEC games).

She has posted **12 double-doubles** this year - and 16 in her career. George recently compiled a streak of eight consecutive double-doubles, a run that ranked tied as the fourth-longest in UF history. The run ended at Georgia on Jan. 12, when she posted 15 points with eight rebounds.

Not bad considering she was held scoreless on 0-for-1 shooting with three rebounds in the season opener versus Michigan!!

George also has a team-high **16 double-figure scoring games**.

Jones Right Behind George

Senior **Jordan Jones** has been doing a bit of everything for the Gators this year, contributing 12.4 points, in addition to 3.7 rebounds, 1.9 assists and 1.05 steals, while hitting 47-of-135 treys (34.8%). Jones had started 43 consecutive games prior to missing the Feb. 2 game at LSU because of a concussion she sustained during the Jan. 29 game at Arkansas.

Jones had converted at least one three-point attempt in **11 consecutive games** before going 0-3 from beyond the arc against South Carolina on Jan. 8. This was her career third double-digit streak of converting three-pointers in a game, having already notched runs of 23 and 16.

She has at least **one three-pointer in all except three games** this year (one of which she didn't play in).

During her two-plus-year tenure at UF, Jones has drained **174 three-pointers**, the fourth most in a career (third is 212 by Sha Brooks, 2005-09), as well as **271 overall**.

Last year, Jones was 72-of-186 from long range for 38.7%, the second-highest accuracy mark in a season in UF history. Her 72 treys tied for the seventh-most in a season.

Deana Allen Stars off the Bench & NOW as a Starter

Senior **Deana Allen** has provided Florida with a definite spark off the bench in every game she's played this year, averaging 7.6 points (fifth on team) and 5.6 rebounds (second on team), with 1.6 steals (second on the team). She hits 34.4 percent from the three-point arc (the second-highest on the team) and 71.4 percent from the free throw line (second-highest percentage).

The only game Allen has missed this year was the season-opener against Michigan when she sat out to recover from a concussion.

Allen did make her **first start of the year on Jan. 8** against South Carolina, responding with nine points, a season-high 10 rebounds and a team-best three assists with a pair of steals. She followed that with another start and a 14-point, six-rebound, four-steal performance at Georgia. Allen has **started SEVEN games** this year.

SWAT Sisters

With her first of two blocked shots during the Jan. 1 game against Kentucky, **Jennifer George** became one of eight Gators in program history who have blocked at least 100 career shots.

With senior **Azania Stewart**

Numbers Watch

1306 career points by senior **Jordan Jones**, who scored 419 points in her first year at South Carolina

185: career blocked shots by senior **Azania Stewart**, who ranks third in UF history

92: Gator wins compiled by head coach **Amanda Butler (80th win vs. FSU, Nov. 17; 85th at San Francisco)**

132: career wins compiled by head coach **Amanda Butler**, who is in her sixth year at the helm of a program; she collected 40 of those during her two years at UNC Charlotte (120th win vs. FSU, Nov. 17; 125th at San Fran)

74.7%: winning percentage (59-20 record) at **home** are the Gators under coach Amanda Butler (9-3 in 2011-12)

39: years old is head coach **Amanda Butler**, born March 6, 1972, making her the **second-youngest** head coach in the SEC (she had been the youngest in the league since the day she was hired in April 2008 and thru the 2010-11 season; LSU's 1st year coach Nikki Caldwell now youngest)

having already swatted 100+, the 2011-12

squad is only the second team in UF history with a pair of 100-plus shot blockers on it. The 1984-85 Gator team featured **Keturah Bell** (160 career blocks) and future 1992 U.S. Olympian **Tammy Jackson** (121).

Career 100-Blocked Shots

| | |
|------------|------------------------------------|
| 357 | Vanessa Hayden, 2000-04 |
| 230 | Quietella Bonner, 1976-81 |
| 185 | Azania Stewart, 2008-pres |
| 172 | DeLisha Milton, 1993-97 |
| 160 | Keturah Bell, 1982-86 |
| 121 | Tammy Jackson, 1981-85 |
| 119 | Jennifer George, 2009-pres. |
| 110 | Aneika Henry, 2007-09 |

Game 23: Florida hosts Ole Miss * February 5, 2012 * 2 pm ET

First Half in the Books

Florida capped the first half of the team's 16-game SEC schedule on Sunday, Jan. 29 with a 73-72 double-overtime loss at Arkansas.

The Gators compiled a 3-5 record during the first half of the slate, a mark that placed them tied with Mississippi State for eighth in the standings.

The Perfect 10

Because of injuries, the Gators have been limited to 10 healthy players for every game this year except the season opener versus Michigan when only nine Gators suited up.

Florida began the season with **Kayla Lewis** in the starting lineup and senior **Deana Allen** out with a concussion, while freshman **Andrea Vilaro Aragon** was in Spain for the first four games due to the passing of her mother and freshmen **Viktorija Dimaite** (ankle) and **Carlie Needles** (knee) redshirting the season due to injuries.

Lewis suffered a stress fracture during the Nov. 17 Florida State game and has not dressed since the third game of the year. She will redshirt the 2011-12 season.

Everyone Scores!

Four times this year all 10 Gators have scored: at San Francisco (Dec. 7), vs. Samford (Dec. 28) and vs. LSU twice (Jan. 15 & Feb. 2).

Strongest Gator

Jennifer George is unquestionably the strongest member of the team. With her legs, she moves 225 pounds for a dead lift (2 sets, 9 reps) and 185 pounds for a front squad (2 sets, 10 reps), while using 65 pound dumb bells for a bench press (2 sets, 6 reps).

UF vs. Ranked Teams

Florida is 1-4 this year against nationally-ranked opponents, posting a 72-58 victory on Nov. 17 against Florida State, which checked in at No. 21 in the AP and No. 19 in the ESPN-Coaches poll, but losing to No. 11/12 Rutgers (63-49) on Dec. 2 at the Ocean Center in Daytona Beach, to No. 6 Kentucky (59-56) on Jan. 1 in Gainesville and 57-52 on Jan. 22 in Lexington and at No. 19/16 Georgia (61-55).

The Gators earned two wins last year against ranked foes, with the last coming on Feb. 27, 2011 when unranked UF knocked off then-No. 22-ranked Georgia, 74-71, in the O'Connell Center.

Including this year's win against the Seminoles, Florida has collected 46 upset wins against a higher-ranked opponent, with 26 of those coming when the Gators were unranked.

Back-to-Back 20-Point Games Not Common

Three different Gators have charted a 20-point game this season: **Lanita Bartley** (28 vs. Charlotte), **Jennifer George** (24 at San Francisco, 21 vs. Stetson) and **Jordan Jones** (21 vs. Michigan, 28 vs. Hampton, 20 vs. Rutgers, 20 vs. Charleston Southern).

The last time a Gator was able to string back-to-back 20-point performances was during the 2008-09 season, when **Sha (SHAY) Brooks** tagged Arkansas for 27 (Feb. 19) and South Carolina for 24 (Feb. 22).

SEC Stat Corner

Where Gators Rank **ALL** games entering games played Feb. 2 ...

| | All-Games | | SEC-Games | |
|------------------------------|-----------|-------|-----------|------|
| | Rank | Stat | Rank | Stat |
| Scoring | | | | |
| Jennifer George | 9 | 13.1 | 9 | 12.0 |
| Jordan Jones | 12 | 12.4 | T23 | 10.8 |
| Rebounding | | | | |
| Jennifer George | 3 | 9.4 | 2 | 8.6 |
| Deana Allen | 17 | 5.6 | 20 | 5.0 |
| Double-Doubles | | | | |
| Jennifer George | T1 | 12 | 1 | 5 |
| FG Percentage | | | | |
| Jennifer George | 3 | 57.0% | 6 | 53.9 |
| Assists | | | | |
| Lanita Bartley | 8 | 3.2 | T8 | 3.0 |
| Steals | | | | |
| Lanita Bartley | 7 | 2.0 | T4 | 2.3 |
| FT Percentage | | | | |
| Jordan Jones | 12 | 71.2% | -- | -- |
| 3-PT FG Made | | | | |
| Jordan Jones | 3 | 2.2 | T3 | 2.0 |
| 3-PT FG Percentage | | | | |
| Jordan Jones | 8 | 34.8% | 12 | 33.3 |
| Blocked Shots | | | | |
| Azania Stewart | T2 | 2.3 | 4 | 1.9 |
| Jennifer George | 5 | 1.7 | 3 | 2.2 |
| Assist/Turnover Ratio | | | | |
| Lanita Bartley | 9 | 1.2 | 9 | 1.0 |
| Offensive Rebounds | | | | |
| Jennifer George | 1 | 4.2 | 2 | 3.7 |
| Deana Allen | 8 | 3.0 | -- | -- |
| Lanita Bartley | T12 | 2.7 | -- | -- |
| Defensive Rebounds | | | | |
| Jennifer George | 3 | 5.1 | 4 | 4.9 |
| Minutes Played | | | | |
| Jordan Jones | 9 | 31.3 | 9 | 33.9 |

George Joins Elite Swat Team

Jennifer George's first blocked shot of the game against Kentucky on Jan. 1 was the 100th of her career (Keyla Snowden, 14:13 mark of first half). She became the eighth Gator to block 100 in career.

George Honored as SEC Player of Week

Jennifer George was named the SEC Player of the Week for the games played Dec. 19-25.

George was the catalyst in Florida winning its own Gator Holiday Classic, as she totaled 34 points and 23 rebounds en route to earning MVP honors, the first such honor of her career.

George posted a double-double in both tournament wins, extending her double-double streak to four games, the first time a Gator has

Univ. of Florida Quick Facts

General Information

Location: Gainesville, Florida
 Est. Population: 124,491
 Founded: 1853
 Enrollment: 52,271
 Nickname: Gators
 Colors: Orange & Blue (PMS 172 & 287)
 Conference: Southeastern (SEC)
 Home Court: Stephen C. O'Connell Center
 (11,373)
 Press Row Phone: 352-367-1801
 President: Dr. J. Bernard Machen
 Athletics Director: Jeremy Foley
 Sr. Associate AD - SWA: Lynda Tealer
 Office: 352-375-4683
 Faculty Rep: Dr. Michael Sagas
 Ticket Office: 352-375-4683, ext. 6800
 Athletic Web Pages: www.GatorZone.com
 www.CoachAmandaButler.com
 Sports Offered (21): Baseball, Basketball (M&W), Football, Cross Country (M&W), Golf (M&W), Gymnastics (W), Lacrosse (W), Soccer (W), Softball, Swimming & Diving (M&W), Tennis (M&W), Indoor/Outdoor Track & Field (M&W), Volleyball (W)

2011-12 Coaching & Support Staff

Head Coach: Amanda Butler (Florida)
 Asst. Coaches: Brenda Mock Kirkpatrick .. (Wake Forest), David Lowery (Mississippi St.), Murriel Page (Florida)
 Asst. to the Head Coach: Janna Magette
 Exec. Asst. to Amanda Butler: Lani McQuade
 Athletic Trainer: John Barrett
 Strength Coach: Rich Jacobs
 Academic Advisor: Judy Traveis
 Video Coordinator: Edwina Johnson

2011-12 Team Information

Letterwinners Return/Lost, 2010-11: 10 / 2
 Starters Returning/Lost from 2010-11: 5 / 0
 Newcomers: 3
 Seniors/Juniors/So./Fr.: 5 / 1 / 4 / 3

2010-11 Season Review

Overall Record: 20-15
 SEC Record (finish): 7-9 (eighth)
 Postseason: 2-1 (WNIT Round of 16)
 SEC Tournament: 1-1 (quarterfinals)

Florida Communications

W-Basketball Contact: Kathy Cafazzo
 Email: KathyC@gators.ufl.edu
 Office Phone: 352-375-4683, ext. 6133
 Cell: 352-316-4575
 FAX: 352-375-4809
 Web Sites: www.GatorZone.com
 www.CoachAmandaButler.com
 Twitter: @GatorZoneWBK, @CoachButlerUF
 Facebook: FloridaWomensBasketball
 USPS Mailing Address: UAA Communications
 PO Box 14485
 Gainesville, FL 32604
 Overnight Mailing Address:
 UAA, Ben Hill Griffin Stadium
 157 Gale Lemerand Dr.
 Gainesville, FL 32611

Game 23: Florida hosts Ole Miss * February 5, 2012 * 2 pm ET

strung together as many since Vanessa Hayden did so midway thru the 2003-04 season.

George shot an incredible 72.2 percent from the floor during UF's two games during the week, hitting 13-of-18, and blocked five shots.

Gators in the Golden State

When Florida played at San Francisco on Dec. 7, it was the first time the Gators have played a game in the state of California since Nov. 18, 2006.

Florida in the Big Apple

The Nov. 25 game against La Salle was just the second time in program history Florida played a game in the state of New York. The only other trip to the Big Apple was on Nov. 17, 2000, when the Gators won at Fordham, 76-36.

I Love NY

Lanita Bartley made the most of her first-ever visit to New York, averaging 22.0 points and 8.0 rebounds, while hitting 16-of-17 free throws and leading the Gators to two wins.

While it was their first trip to the Big Apple, **Jordan Jones** and **Jennifer George** put up big numbers in two tournament wins, with Jones contributing 18.0 points and 6.0 rebounds, while hitting 7-of-18 three-pointers, and George tallying 13.5 points and 12.0 rebounds, converting 68.8 percent from the field (11-16).

Bartley and George earn a spot on the Courtyard LaGuardia Turkey Classic All-Tournament Team for their performances.

Gators in the Big Apple

Only four Gators on the current 13-player roster had ever stepped foot in the state of New York prior to the Courtyard LaGuardia Turkey Classic hosted by Long Island University, Nov. 25-26.

Only **Jennifer George**, **Jordan Jones**, **Ndidi Madu** and **Azania Stewart** had visited New York.

Opening with a Small Bench

Florida suited up just nine players for the Nov. 11 season-opener against Michigan, with **Deana Allen** listed as day-to-day, **Andrea Vilaro Aragon**es in Spain with the passing of her mother and freshmen **Viktorija Dimaite** and **Charlie Needles** redshirting the season due to injury.

All nine played at least 10 minutes in the game against the Wolverines and eight scored.

The Gators did Allen back for its next game versus Stetson and she responded with 11 points and eight rebounds in 19 minutes of work.

Mini Preseason Outlook

For the third time since the 1990-91 season – and the first time since the 2003-04 campaign – the Gators return all five starters from the previous year. Florida's 2011-12 roster features five seniors, each of whom boasts starting experience, as 10 returning letterwinners welcome three talented newcomers aiming to build upon last year's 20-win season and earn a fifth consecutive postseason berth under fifth-year head coach **Amanda Butler**.

Gators Assemble Nationally-Ranked Signing Class for 2012-13

Officially signing a National Letter of Intent to join the Gators for the 2012-13 season are:

Chandler Cooper (5-11, Guard, Clarksville, Tenn./Clarksville HS),

Christin Mercer (6-0, Post, Douglasville, Ga./Douglas County HS),

January Miller (5-8, Guard, Orlando, Fla./University HS) and

Sydney Moss (5-11, Guard/Forward, Union, Ky./Boone County HS).

"I'm really excited about this class in every way," **Coach Amanda Butler** said of the quartet. "They have a chance to be one of the most talented classes that has ever played here. I like their personalities, they all have championship mentalities and they are all excited to be Gators and that goes a long, long way with me. All of them will be the type of players that others are definitely going to want to play with and not just because they are talented, but because of the type of people they are."

Chandler Cooper, who ranked as high as the No. 30 overall prospect in the 2012 HoopGurlz Recruiting Rankings, is one of five players from Clarksville High School to sign a NLI to an NCAA Division I basketball program, with three to a Southeastern Conference school during November's early signing period. Cooper already owns the program's all-time record with 177 career three-pointers. In her regimented practice routine, Cooper is said to attempt 200 three-pointers per day. She averaged 9.1 points, 4.2 rebounds and 3.8 assists during her junior season.

Christin Mercer was honored as a 2011 Class AAAA First Team All-State performer, as she helped Douglas County High School to a 31-1 record and advance to the state semifinals for the first time in school history. The 2011 Region 5-AAAA Player of the Year averaged 14.2 points, 10.3 rebounds and 2.7 blocks per game while hitting 51.8 percent of her shots during her junior season with coach Chet Forsh's Lady Tigers.

January Miller verbally committed to the Gators following her sophomore season, when she averaged 21 points, 6.2 rebounds, 3.9 steals and 2.6 assists and eclipsed the 1,000-point plateau. Through her three years running the floor at University High School, Miller has amassed 1,507 points in addition to averaging 18.8 points, along with 6.0 rebounds, 2.6 assists and 3.7 steals. The three-time All-Central Florida honoree is already UHS's all-time leader scorer in girl's history and has a chance to become the school's all-time leader, needing 77 points her senior season to reach the boy's mark.

Sydney Moss has been a two-time First Team All-State selection as named by the Louisville Courier-Journal and Lexington Herald, collecting honors in 2010 and 2011. She led Boone County High School to the 33rd District championship when she was named MVP in 2010 and 2011, as well as the 9th region title when she was the 2010 MVP and an appearance in the 2010 KHSAA State Tournament final, being named to the 2010 KHSAA All-State Tournament Team. Moss has amassed 2,140 points and 1,156 rebounds in her prep career, averaging a double-double in her career with 18.2 points and 10.5 rebounds. During her junior campaign, Moss averaged 22.9 points, 11.8 rebounds, 3.4 assists, 2.8 steals and 1.3 blocks, while hitting 51.4 percent from the floor, including 35.3 percent from the three-point arc.

Stewart is SEC's Leading Returning Shot Blocker

Senior center **Azania Stewart** blocked 1.8 shots per game, the second-highest average among all SEC players last year, trailing only Tennessee's Kelly Cain, who transferred away from the program during the 2011 summer.

A Safer, Cosier O'Connell Center

The O'Connell Center underwent renovations during the 2011 summer. New handrails were installed throughout the lower level section, all of the 13-year-old lower level bleachers were replaced with contoured blue seats and the original, 31-year-old support structure and undercarriage were replaced. These upgrades slightly reduced the maximum capacity for basketball games from 12,000 to 11,373.

All Starters from 2010-11 Return

For the third time since the 1990-91 season, the Gators return all five starters from the previous year (1996-97 and 2003-04 were the other previous years and both ended in trips to the NCAA Tournament – 1997 team went to Elite Eight; 2004 team to second round).

Leading the Way – and Returning

Jordan Jones led the 2010-11 balanced Gator scoring effort, recording 10.2 points per game, hitting a team-leading 72 three-pointers at a 38.7 percent clip and playing 32.6 minutes per outing.

Azania Stewart was Florida's leading rebounder last season with 6.1 per game and hit 52.7 percent of her shots from the floor. Her 62 blocked shots also was tops for the Gators and ranked second in the SEC.

Lanita Bartley dished a team-leading 3.4 assists in 2010-11 and collected a team-high 1.77 steals, while finding her way to the free throw a team-best 132 times.

Stewart's Uniqueness in Senior Quintet

The 2011-12 roster features five seniors, each of whom boasts starting experience. Of the five seniors, only **Azania Stewart** was recruited by and will have played four years under coach **Amanda Butler**. Fifth-year senior **Ndidi Madu** signed under former coach Carolyn Peck; **Jordan Jones** played her freshman year at South Carolina before transferring to UF; **Deana Allen** and **Lanita Bartley** both played at a junior college before transferring to UF.

Game 23: Florida hosts Ole Miss * February 5, 2012 * 2 pm ET

Tough 24 Hours

The Gators suffered tough news on Nov. 6 and 7 to two of their freshmen. **Carlie Needles** tore the ACL in her right knee during a scrimmage (non-contact, defensive play) on Nov. 6. Less than 24 hours later, **Andrea Vilaró Aragonés'** mother Maria Angels Aragonés Barbera passed away from cancer. Andrea flew back to Barcelona, Spain on Nov. 3 to be with her mother and family.

Rookie to Redshirt

Upon signing with UF, **Viktorija Dimaite's** plan with the Gator coaching staff had always been to redshirt the 2011-12 season to develop her strength and get physically stronger. The day before the 2011 Under-20 European Championships were to begin, Dimaite **dislocated her right ankle** and was unable to play with her native Lithuanian U20 team that was set to compete. Since stepping foot on campus for the 2011 fall semester, Dimaite has been rehabilitating her injury.

Lewis on the Mend

Sophomore **Kayla Lewis**, who missed 19 games last year due to injury, was hampered during the summer because of a bone bruise on her left tibia; similar injury she dealt with last year on her right tibia, but not as severe. Her preseason workouts were limited as a result. The last game she played prior to the 2011-12 season was on Jan. 23 at LSU, seeing just eight minutes of action.

Going Global

For the first time in program history, there is more than one foreign player on the roster: senior **Azania Stewart** is first-ever Gator from Europe & Great Britain; freshman **Viktorija Dimaite** is first-ever from Lithuania; and freshman **Andrea Vilaró Aragonés** is first-ever from Spain.

Trio of First-Timers

The three freshmen on the 2011-12 women's basketball roster are the first ever in program history from a specific state or country: **Carlie Needles** is the first Gator hoopster from the state of Colorado; **Viktorija Dimaite** is the first ever from Lithuania; and **Andrea Vilaró Aragonés** is the first-ever Gator from Spain to join the team.

Two State Gatorade Gators

- **Deana Allen** – 2008 Gatorade LOUISIANA High School Player of the Year for girl's basketball
- **Kayla Lewis** – 2010 Gatorade GEORGIA High School Player of the Year for girl's basketball

Growing Up Gator

Jaterra Bonds is the fifth different member of her family to attend UF: cousins Vernell Brown Sr. (1982-85), Vernell Brown II (2000-05) and Vince Brown, all of whom played for the Gator football team; her father Claude Bonds graduated from UF with a degree in art.

Second Degree

Jordan Jones - earned her bachelor's degree in Business in May of 2011; currently pursuing a Master's Degree in Sport Management (this is the third consecutive season a member of the team has played having already earned their bachelor's degree - **Susan Yenser** in 2009-10 and **Ebonie Crawford** in 2010-11).

Fast Learner

Azania Stewart, a native of England, began playing basketball when she was 15 years old when she was spotted while competing in netball, a 7-on-7 game similar to basketball, but the players don't dribble and the hoop does not have a backboard.

Respect Your Elders

Deana Allen has seven younger brothers and sisters.

Jersey Girl

Kayla Lewis' high school jersey was chosen to be in the 2010 Ring of Honor at the National Women's Basketball Hall of Fame.

Might as Well JUMP!

Kayla Lewis and **Deana Allen** have the top vertical jumps on the team, with Lewis (a.k.a. 'Roo') lifting off for 31 inches and Allen for 28.

Rookies Going the Distance

Of the three freshmen on the 2011-12 roster, **Carlie Needles** of Highlands Ranch, Col. (located 1,453 miles from Gainesville), is the closest in distance to home; **Viktorija Dimaite** is from Lithuania – 5,223 miles from Gainesville; **Andrea Vilaró Aragonés** is from Barcelona, Spain – 4,642 miles from Gainesville.

Downtown from Denver

Freshman **Carlie Needles** narrowly lost a three-point shooting contest against then-Denver Nuggets-now NY Knicks star Carmelo Anthony, who "had to alter the rules to beat her," Carlie's father, Corey, said (the contest is posted on YouTube).

Representing Their Country

- Freshman **Viktorija Dimaite** was a member of Lithuania's 2011 U20 Team during the summer
- Senior **Azania Stewart** spent the 2009, 2010 & 2011 summers in Europe, where she was a member of her native Great Britain's 2009 Under-20 World University Games Team that competed in Belgrade, Serbia, and on the 2010 & 2011 Standard of Life Teams that participated in the EuroBasket Championships
- Freshman **Andrea Vilaró Aragonés** has played on several Spanish national teams, most recently for the 2011 U18 European Championships squad that placed third

2011-12 & 2012-13 Women's Basketball More Significant Rule Changes:

*the three-point line has moved from a distance of 19'9" to 20'9" (the current distance in men's basketball)

*Restricted area arc: addition of a restricted area three (3) feet from the center of the basket (rationale is that the arc will mark the area under the basket where a secondary defender is not

You Can Call Me ...

It seems everyone on the 2011-12 squad has a nickname. In case you hear a name you're not familiar with, here's who's whom:

| | | |
|--------|---|------------------------|
| DA | = | Deana Allen |
| Nita | = | Lanita Bartley |
| JT | = | Jaterra Bonds |
| Vikta | = | Viktorija Dimaite |
| George | = | Jennifer George |
| JJ | = | Jordan Jones |
| Roo | = | Kayla Lewis |
| DiDi | = | Ndidi Madu |
| Shine | = | Brittany Shine |
| Z | = | Azania Stewart |
| Veela | = | Andrea Vilaro Aragonés |
| Lil | = | Lily Svete |

permitted to establish a legal guarding position.)

NCAA Rule Change: Preseason Practice

Women: shall not commence on-court preseason basketball practice sessions prior to 5 p.m. on the date that is 40 days prior to the date of the institution's first regular-season contest. An institution shall not engage in more than 30 days of countable athletically related activities prior to its first regular-season contest.

SEC Expansion

The SEC has welcomed Texas A&M and Missouri to the join the league, beginning with competition in all sports for the 2012-13 academic year.

The addition of Missouri on Nov. 6, 2011, will increase SEC membership to 14 institutions. The additions of Texas A&M, announced on September 25, 2011, and Missouri, are the first expansions for the SEC since September of 1991 when the University of South Carolina joined the league.

The University of Arkansas joined the SEC in August of 1991. With the addition of Arkansas and South Carolina, the SEC was the first conference to split into divisions and add a conference championship game in 1992.

Expanded Expansion

With the addition of Missouri and Texas A&M, the SEC's television package will go from a viewership of 19 million homes to 30 million.

The 2011-12 Schedule

*18 Games vs. 2011 Postseason Teams - including EACH of first four opponents

*4 Games vs. coaches ranked among the all-time top-7 winningest active coaches in NCAA Div. I, II and III history:

1. Pat Summitt, Tennessee (Feb. 26 in Knoxville) - 1,071 wins
2. C. Vivian Stringer, Rutgers (Dec. 2 in Daytona Beach) - 863 wins
6. Andy Landers, Georgia (Jan. 12 in Athens, Feb. 19 in Gainesville) - 773 wins

*16 Home games

Game 23: Florida hosts Ole Miss * February 5, 2012 * 2 pm ET

SEC Preseason Coaches' Poll

| School..... | POINTS |
|----------------------------|-----------|
| 1. Tennessee | 120 |
| 2. Kentucky..... | 100 |
| 3. Georgia..... | 98 |
| 4. LSU..... | 96 |
| 5. Florida..... | 92 |
| 6. Vanderbilt..... | 85 |
| 7. South Carolina..... | 62 |
| 8. Arkansas..... | 57 |
| 9. Auburn..... | 39 |
| 10. Alabama..... | 29 |
| 11. Mississippi State..... | 25 |
| 12. Ole Miss..... | 16 |

FIRST TEAM ALL-SEC

Shekinna Stricklen, Tennessee
 LaSondra Barrett, LSU
 A'dia Mathies, Kentucky
 Glory Johnson, Tennessee
 C'iera Ricketts, Arkansas
 Stephanie Holzer, Vanderbilt
 Meighan Simmons, Tennessee
 Jasmine James, Georgia

SECOND TEAM ALL-SEC

La'Keisha Sutton, South Carolina
 Ieashia Walker, South Carolina
 Adrienne Webb, LSU
 Valencia McFarland, Ole Miss
 Ericka Russell, Alabama
 Jasmine Hassell, Georgia
 Tiffany Clarke, Vanderbilt
 Sarah Watkins, Arkansas

SEC Preseason Media Poll

Order of Finish

| | |
|----------------------------|------------|
| 1. Tennessee | 264 |
| 2. Georgia..... | 228 |
| 3. Kentucky..... | 212 |
| 4. LSU..... | 189 |
| 5. Vanderbilt..... | 172 |
| 6. Florida..... | 151 |
| 7. Arkansas..... | 142 |
| 8. South Carolina..... | 107 |
| 9. Auburn..... | 94 |
| 10. Alabama..... | 55 |
| 11. Mississippi State..... | 54 |
| 12. Ole Miss..... | 48 |

First-Team

Jasmine James, Georgia
 A'dia Mathies, Kentucky
 LaSondra Barrett, LSU
 Glory Johnson, Tennessee
 Shekinna Stricklen, Tennessee

Second-Team

C'iera Ricketts, Arkansas
 Sarah Watkins, Arkansas
 Valencia McFarland, Ole Miss
 Meighan Simmons, Tennessee
 Stephanie Holzer, Vanderbilt

Team & Gator Highlights

*Earned first win vs. LSU in Baton Rouge (Feb. 2, 2012) since Jan. 21, 1996
 *Won the Gator Holiday Classic
 *Compiled a six-game win streak, the longest since the 2008-09 season
 *Defeated No. 22 Florida State (Nov. 17) for 46th upset win in program history; 26th win vs. ranked team when UF was unranked
 *Limited Alabama to 37 points, the lowest by an opponent since Southern scored 35 in December 2009
 *Played first games in California since Nov. 2006
 *Played second-ever game in New York

Amanda Butler

*won 125th career game and 85th at UF (Dec. 7 at San Francisco)

Lanita Bartley

*Courtyard LaGuardia Turkey Classic All-Tournament Team (hosted by LIU)

Jaterra Bonds

*Gator Holiday Classic All-Tournament Team (hosted by UF)

Jennifer George

*SEC Player of the Week, Dec. 19
 *MVP of Gator Holiday Classic (hosted by UF)
 *Courtyard LaGuardia Turkey Classic All-Tournament Team (hosted by LIU)

Jordan Jones

*Capital One Academic All-District 4 Women's Basketball Team
 *Gator Holiday Classic All-Tournament Team (hosted by UF)

UF's Most Frequent Foes

| Team | Games Played | UF Record in Series |
|---------------|--------------|---------------------|
| Florida State | 68 | 41-27 |
| Georgia | 58 | 13-46 |
| Alabama | 51 | 22-29 |
| Vanderbilt | 49 | 19-30 |
| Auburn | 47 | 15-32 |
| Miami | 42 | 28-14 |

What's Returning from 2010-11 for 2011-12

| Category..... | Percentage Returning |
|-------------------------------|------------------------|
| Games Started | 100% (175 of 175) |
| Minutes Played..... | 94.4% (6,679 or 7,075) |
| Points..... | 95.1% (2,217 of 2,331) |
| Rebounds | 79.8% (1,143 of 1,432) |
| Field Goals | 94.4% (823 of 872) |
| FT Made | 95.9% (376 of 392) |
| FT Attempted..... | 96.2% (564 of 586) |
| 3-Point FGs | 100% (195 of 195) |
| 3-PT FG Att..... | 100% (575 of 575) |
| Assists | 98.0% (439 of 448) |
| Blocks..... | 88.5% (138 of 156) |
| Steals..... | 96.5% (246 of 255) |
| Returning Starters | 5 |
| Returning Letterwinners | 10 |
| Leading Retning Scorer.. | J.Jones, 10.2 ppg |
| Leading Rebounder..... | Azania Stewart, 6.1 |

Florida's Record by Game Location (State & Territories)

(entering game vs. Ole Miss)

State/U.S. Territory Win . Loss

| | | |
|----------------------------|------------|------------|
| Alabama | 13 | 32 |
| Alaska | 0 | 0 |
| Arizona | 1 | 2 |
| Arkansas | 10 | 7 |
| California | 5 | 8 |
| Colorado | 1 | 2 |
| Connecticut | 2 | 2 |
| Delaware | 0 | 0 |
| District of Columbia | 1 | 1 |
| Florida | 436 | 206 |
| Georgia | 14 | 52 |
| Hawaii | 2 | 1 |
| Idaho | 1 | 1 |
| Illinois | 3 | 4 |
| Indiana | 2 | 2 |
| Iowa | 0 | 1 |
| Kansas | 0 | 0 |
| Kentucky | 10 | 15 |
| Louisiana | 5 | 18 |
| Maine | 4 | 0 |
| Maryland..... | 0 | 0 |
| Massachusetts | 4 | 0 |
| Michigan | 1 | 0 |
| Minnesota..... | 0 | 0 |
| Mississippi | 20 | 25 |
| Missouri | 0 | 0 |
| Montana | 2 | 0 |
| Nebraska | 0 | 1 |
| Nevada | 1 | 1 |
| New Hampshire..... | 0 | 0 |
| New Jersey | 6 | 2 |
| New Mexico | 3 | 1 |
| New York | 3 | 0 |
| North Carolina | 5 | 6 |
| North Dakota | 0 | 0 |
| Ohio | 2 | 1 |
| Oklahoma | 1 | 0 |
| Oregon | 0 | 1 |
| Pennsylvania | 5 | 4 |
| Rhode Island | 3 | 1 |
| South Carolina | 11 | 5 |
| South Dakota..... | 0 | 0 |
| Tennessee | 22 | 55 |
| Texas | 9 | 6 |
| Utah | 0 | 2 |
| Vermont..... | 0 | 0 |
| Virgin Islands..... | 0 | 2 |
| Virginia | 7 | 8 |
| Washington..... | 0 | 0 |
| West Virginia | 2 | 0 |
| Wisconsin | 3 | 1 |
| Wyoming..... | 0 | 0 |
| Bahamas | 3 | 1 |

What Returned from 2009-10 for 2010-11

| Category..... | Percentage Returning |
|-------------------------------|------------------------|
| Games Started | 33.1% (53 of 160) |
| Minutes Played..... | 29.4% (1,912 of 6,500) |
| Points..... | 32.9% (656 of 1,995) |
| Rebounds | 20.8% (253 of 1,217) |
| Field Goals | 33.6% (238 of 709) |
| FT Made | 34.5% (123 of 357) |
| FT Attempted..... | 33.6% (175 of 521) |
| 3-Point FGs | 25.9% (57 of 220) |
| 3-PT FG Att..... | 28.6% (208 of 727) |
| Assists | 27.3% (120 of 439) |
| Blocks..... | 48.3% (58 of 120) |
| Steals..... | 24.2% (70 of 289) |
| Returning Starters | 2 |
| Returning Letterwinners | 5 |
| Leading Retning Scorer.. | J.Jones, 9.1 ppg |
| Leading Rebounder .. | Jennifer George, 5.2 |

Game 23: Florida hosts Ole Miss * February 5, 2012 * 2 pm ET



Head Coach Amanda Butler

Combine passion, pride, toughness, intensity, humor, wittiness, competitiveness, leadership and mix in a healthy dose of a swagger and you have Amanda Butler, who in 2011-12 is in her fifth year as head coach of the University of Florida women's basketball team.

Each of her first four Gator teams have earned a postseason berth – the first time any of the previous eight coaches in program history has been able to do so.

Butler's four-year win total (78) with the Orange & Blue is already the most of any coach in program history through their respective first four seasons.

Butler also has made the O'Connell Center a tough venue for opponents, as her Gators have won 89.2 percent of their games against non-conference foes, posting a 33-4 home record during her four-year tenure.

In the 37-year history of the Florida women's basketball program, the team has posted 20 wins 10 times, with Butler accounting for two of those, including the 20-victory campaign in 2010-11.

That final 20-win season coming in 2010-11 was compiled by an extremely young and inexperienced team that returned only two starters and listed one scarcely-used senior on its roster.

The 2008-09 season will go down as one of the most successful campaigns in program history. In addition to tying the school record with 24 victories during the year, Florida marched into the second round of the NCAA Tournament for the seventh time in history. In the team's first trip to the round of 32 since 2004, the 2008-09 squad had its season close on the road at top-ranked and eventual NCAA champion Connecticut. Florida ended the year rated among the top-25 in both national polls for the first time since 2002.

When Florida earned the No. 23 spot in the Dec. 8, 2008 Associated Press national poll, Butler joined an elite list of women. She became one of only 24 women in the history of NCAA Division I women's basketball who had played for a team that was ranked in the AP Top-25 and later coached a team that earned a top-25 ranking. Even more rare was the fact the Butler played for and coached the SAME team that earned a top-25 ranking, becoming only the sixth woman ever to accomplish that feat.

During Butler's four-year tutelage in Gainesville, a Gator has been named First-Team All-SEC three times and awarded a spot on the All-SEC Freshman Team three times, as well.

During her two years as head coach at Charlotte, Butler compiled a 40-22 record that included two WNIT berths and a share of the 49ers first-ever Atlantic 10 Conference regular-season championship. Her debut season resulted in an overall record of 21-9, the most wins ever by a Charlotte coach in their first year, as Butler was recognized as the league's Coach of the Year.

Given her talents as a collegiate coach, it comes as no surprise that Butler has played a role in some of the most successful seasons in Florida history. Upon graduation, then-Florida coach Carol Ross hired Butler as the Gators' assistant coach. That 1995-96 squad compiled a 21-9 record and earned a berth into the NCAAs. The following season, the Gators won a program-record 24 games and advanced to the Elite Eight of the NCAA Tournament, falling to Old Dominion, 53-51.

Butler's Head Coaching Record

| Year | School | Record | Conference | Postseason |
|------------------------|-----------|---------------|--------------|---------------------------------|
| 2005-06 | Charlotte | 21-9 | 13-3 (T-1st) | WNIT First Round |
| 2006-07 | Charlotte | 19-13 | 9-5 (4th) | WNIT Second Round |
| 2007-08 | Florida | 19-14 | 6-8 (T-7th) | WNIT Round of 16 |
| 2008-09 | Florida | 24-8 | 9-5 (T-4th) | NCAA Second Round |
| 2009-10 | Florida | 15-17 | 7-9 (T-7th) | WNIT Second Round |
| 2010-11 | Florida | 20-15 | 7-9 (8th) | WNIT Round of 16 |
| 2011-12 | Florida | 14-8 | 4-5 | TBA |
| Total (7 Years) | | 132-84 | 55-44 | 6 Postseason Appearances |
| At Florida (5) | | 92-62 | 33-36 | 4 Postseason Appearances |
| At Charlotte (2) | | 40-22 | 26-8 | 2 Postseason Appearances |

| | Overall (at UF) | Home | Away | Neutral |
|-----------------------|-----------------|-----------|-----------|-----------|
| Alabama | 4-3 (4-3) | 3-1 (3-1) | 1-2 (1-2) | 0-0 |
| Alabama A&M | 1-0 (1-0) | 1-0 (1-0) | 0-0 | 0-0 |
| Ala.-Birmingham (UAB) | 2-0 (2-0) | 1-0 (1-0) | 1-0 (1-0) | 0-0 |
| Alabama State | 1-0 (1-0) | 1-0 (1-0) | 0-0 | 0-0 |
| Appalachian State | 1-0 | 1-0 | 0-0 | 0-0 |
| Arkansas | 6-2 (6-2) | 2-1 (2-1) | 3-1 (3-1) | 1-0 (1-0) |
| Arkansas State | 1-0 | 1-0 | 0-0 | 0-0 |
| Arizona State | 1-0 (1-0) | 0-0 | 0-0 | 1-0 (1-0) |
| Auburn | 2-3 (2-3) | 2-0 (2-0) | 0-2 (0-2) | 0-1 (0-1) |
| Ball State | 0-1 | 0-0 | 0-0 | 0-1 |
| Belmont | 1-0 (1-0) | 0-0 | 0-0 | 0-0 |
| Brown | 0-1 (0-1) | 0-0 | 0-1 (0-1) | 0-0 |
| Central Florida (UCF) | 1-0 (1-0) | 1-0 (1-0) | 0-0 | 0-0 |
| Charleston Southern | 1-0 (1-0) | 1-0 (1-0) | 0-0 | 0-0 |
| Charlotte | 2-1 (2-1) | 1-0 (1-0) | 0-1 (0-1) | 1-0 (1-0) |
| Clemson | 1-0 | 0-0 | 1-0 | 0-0 |
| Colorado | 0-1 | 0-0 | 0-1 | 0-0 |
| Connecticut | 0-1 (0-1) | 0-0 | 0-1 (0-1) | 0-0 |
| Coppin State | 1-0 (1-0) | 1-0 (1-0) | 0-0 | 0-0 |
| Davidson | 1-1 | 1-0 | 0-0 | 0-0 |
| Dayton | 2-0 | 1-0 | 1-0 | 0-0 |
| DePaul | 0-1 (0-1) | 0-0 | 0-1 (0-1) | 0-0 |
| Duquesne | 3-1 (1-0) | 2-0 (1-0) | 1-0 | 0-1 |
| Florida | 0-1 | 0-1 | 0-0 | 0-0 |
| Florida A&M | 2-1 (2-1) | 2-1 (2-1) | 0-0 | 0-0 |
| Florida Gulf Coast | 3-1 (3-1) | 2-0 (2-0) | 1-1 (1-1) | 0-0 |
| Florida International | 1-0 (1-0) | 0-0 | 1-0 (1-0) | 0-0 |
| Florida State | 2-3 (2-3) | 1-2 (1-2) | 1-1 (1-1) | 0-0 |
| Fordham | 2-0 | 1-0 | 1-0 | 0-0 |
| George Washington | 0-2 | 0-1 | 0-1 | 0-0 |
| Georgia | 3-6 (3-6) | 3-1 (3-1) | 0-5 (0-5) | 0-0 |
| Hampton | 1-1 (1-1) | 1-0 (1-0) | 0-1 (0-1) | 0-0 |
| Harvard | 1-0 (1-0) | 1-0 (1-0) | 0-0 | 0-0 |
| High Point | 1-1 (0-1) | 1-1 (0-1) | 0-0 | 0-0 |
| Holy Cross | 1-0 (1-0) | 1-0 (1-0) | 0-0 | 0-0 |
| Houston | 2-0 | 1-0 | 1-0 | 0-0 |
| Jacksonville | 2-1 (2-1) | 2-0 (2-0) | 0-1 (0-1) | 0-0 |
| James Madison | 1-0 | 1-0 | 0-0 | 0-0 |
| Kentucky | 1-5 (1-5) | 1-2 (1-2) | 0-3 (0-3) | 0-0 |
| La Salle | 2-1 (1-0) | 1-0 | 0-1 | 1-0 (1-0) |
| LSU | 2-4 (2-4) | 1-2 (1-2) | 1-2 (1-2) | 0-0 |
| Louisville | 0-1 (0-1) | 0-0 | 0-1 (0-1) | 0-0 |
| Loyola Marymount | 1-0 | 0-0 | 1-0 | 0-0 |
| Maryland, BC (UMBC) | 1-0 (1-0) | 1-0 (1-0) | 0-0 | 0-0 |
| Massachusetts | 2-0 | 1-0 | 1-0 | 0-0 |
| Miami (FL) | 0-1 (0-1) | 0-0 | 0-1 (0-1) | 0-0 |
| Miami (OH) | 1-0 (1-0) | 1-0 (1-0) | 0-0 | 0-0 |
| Michigan | 0-1 (0-1) | 0-1 (0-1) | 0-0 | 0-0 |
| Minnesota | 0-1 | 0-0 | 0-1 | 0-0 |

| | Overall (at UF) | Home | Away | Neutral |
|------------------------------|----------------------|----------------------|----------------------|------------------|
| Mississippi | 4-1 (4-1) | 1-1 (1-1) | 3-0 (3-0) | 0-0 |
| Mississippi State | 5-1 (5-1) | 3-0 (3-0) | 2-1 (2-1) | 0-0 |
| Murray State | 1-0 | 1-0 | 0-0 | 0-0 |
| Nebraska | 0-1 (0-1) | 0-0 | 0-1 (0-1) | 0-0 |
| N.C. State | 1-1 (1-1) | 0-0 | 1-1 (1-1) | 0-0 |
| North Florida | 1-0 (1-0) | 1-0 (1-0) | 0-0 | 0-0 |
| Ohio Univ. | 2-0 (2-0) | 1-0 (1-0) | 1-0 (1-0) | 0-0 |
| Old Dominion | 3-1 (2-0) | 2-1 (1-0) | 1-0 (1-0) | 0-0 |
| Pacific | 0-1 (0-1) | 0-0 | 0-1 (0-1) | 0-0 |
| Pittsburgh | 1-1 (1-1) | 1-0 (1-0) | 0-1 (0-1) | 0-0 |
| Prairie View A&M | 1-0 (1-0) | 1-0 (1-0) | 0-0 | 0-0 |
| Providence | 1-0 (1-0) | 0-0 | 0-0 | 1-0 (1-0) |
| Rhode Island | 1-1 | 1-0 | 0-1 | 0-0 |
| Richmond | 2-1 | 1-0 | 1-1 | 0-0 |
| Robert Morris | 2-0 (2-0) | 2-0 (2-0) | 0-0 | 0-0 |
| Rutgers | 0-2 (0-2) | 0-0 | 0-1 (0-1) | 0-1 (0-1) |
| Saint Francis | 1-0 | 1-0 | 0-0 | 0-0 |
| St. John's | 0-1 (0-1) | 0-0 | 0-0 | 0-1 (0-1) |
| Saint Joseph's | 1-2 | 1-0 | 0-1 | 0-1 |
| Saint Louis | 5-0 (1-0) | 3-0 (1-0) | 2-0 | 0-0 |
| St. Bonaventure | 2-0 | 1-0 | 1-0 | 0-0 |
| Samford | 1-0 (1-0) | 1-0 (1-0) | 0-0 | 0-0 |
| San Francisco | 1-0 (1-0) | 0-0 | 1-0 (1-0) | 0-0 |
| Savannah State | 1-0 (1-0) | 1-0 (1-0) | 0-0 | 0-0 |
| South Alabama | 1-0 (1-0) | 0-0 | 0-0 | 1-0 (1-0) |
| South Carolina | 6-2 (6-2) | 2-2 (2-2) | 3-0 (3-0) | 1-0 (1-0) |
| South Florida | 1-0 (1-0) | 1-0 (1-0) | 0-0 | 0-0 |
| Southern | 1-0 (1-0) | 1-0 (1-0) | 0-0 | 0-0 |
| Southern Illinois | 1-0 (1-0) | 0-0 | 0-0 | 1-0 (1-0) |
| Stetson | 4-0 (4-0) | 4-0 (4-0) | 0-0 | 0-0 |
| Temple | 2-2 (2-0) | 0-1 | 1-1 (1-0) | 1-0 (1-0) |
| Tennessee | 1-8 (1-8) | 1-2 (1-2) | 0-3 (0-3) | 0-2 (0-3) |
| TCU | 1-0 (1-0) | 1-0 (1-0) | 0-0 | 0-0 |
| Tulsa | 1-0 | 0-0 | 0-0 | 1-0 |
| U.S. Naval Academy | 1-0 (1-0) | 0-0 | 0-0 | 1-0 (1-0) |
| UCLA | 0-1 | 0-0 | 0-0 | 0-1 |
| UNC Greensboro | 1-0 | 1-0 | 0-0 | 0-0 |
| UNC Wilmington | 1-0 | 0-0 | 1-0 | 0-0 |
| Vermont | 1-0 (1-0) | 1-0 (1-0) | 0-0 | 0-0 |
| Virginia | 0-1 | 0-0 | 0-1 | 0-0 |
| Virginia Tech | 0-1 | 0-0 | 0-1 | 0-0 |
| Western Kentucky | 0-2 | 0-0 | 0-2 | 0-0 |
| Winthrop | 2-0 | 2-0 | 0-0 | 0-0 |
| Wyoming | 0-1 | 0-0 | 0-0 | 0-1 |
| Vanderbilt | 1-5 (1-5) | 0-3 (0-3) | 1-2 (1-2) | 0-0 |
| Xavier | 4-0 (1-0) | 3-0 (1-0) | 1-0 | 0-0 |
| Overall (7 Years): | 132-84 | 85-24 | 36-48 | 11-11 |
| at Florida (5 Years): | 92-62 | 59-20 | 23-36 | 10-6 |
| Conference (at UF): | 55-44 (33-36) | 31-18 (18-16) | 23-25 (14-20) | 0-0 (0-0) |

Gator Career Records

1,000-Point Scorers

| | |
|-------|-----------------------------|
| 2,001 | Merlakia Jones, 1992-95 |
| 1,915 | Murriel Page, 1995-98 |
| 1,895 | Tammy Jackson, 1981-85 |
| 1,858 | DeLisha Milton, 1993-97 |
| 1,820 | Sha Brooks, 2005-09 |
| 1,798 | Quientella Bonner, 1976-81 |
| 1,580 | Brandi McCain, 1998-02 |
| 1,576 | Vanessa Hayden, 2000-04 |
| 1,531 | Keturah Bell, 1982-86 |
| 1,529 | Marsha Dotson, 2005-09 |
| 1,488 | Tiffany Travis, 1996-00 |
| 1,448 | Tonya Washington, 1997-00 |
| 1,398 | Rhvonja Smith, 1987-91 |
| 1,381 | Sophia Witherspoon, 1988-91 |
| 1,349 | Tamara Stocks, 1997-01 |
| 1,347 | LaTonya McGhee, 1989-93 |
| 1,221 | Cheryl Fisher, 1977-81 |
| 1,124 | Bernice Mosby, 2002-05 |
| 1,098 | Jana Bragg, 1984-88 |
| 1,039 | Talatha Bingham, 1996-99 |

887* Jordan Jones, 2009-pres.

Point Average

| | |
|------|-----------------------------|
| 18.9 | Doreen Landolfi, 1977-79 |
| 17.6 | Quientella Bonner, 1977-81 |
| 17.1 | Tammy Jackson, 1981-85 |
| 17.0 | Merlakia Jones, 1992-95 |
| 16.2 | Sophia Witherspoon, 1988-91 |
| 15.4 | Tonya Washington, 1997-00 |
| 15.2 | Bridget Pettis, 1991-93 |
| 15.0 | Murriel Page, 1994-98 |
| 14.9 | DeLisha Milton, 1993-97 |
| 14.9 | Brandi McCain, 1998-02 |
| 14.7 | Vanessa Hayden, 2000-04 |
| 14.4 | Sha Brooks, 2005-09 |
| 13.5 | Bernice Mosby, 2002-05 |
| 13.0 | Terry Whitehead, 1983-85 |
| 12.9 | Tiffany Travis, 1996-00 |
| 12.7 | Rhvonja Smith, 1987-91 |

active leader:
10.4 Jordan Jones, 2009-present

Rebounds

| | |
|-------|----------------------------|
| 1,321 | Quientella Bonner, 1977-81 |
| 1,251 | Murriel Page, 1994-98 |
| 1,141 | Tammy Jackson, 1981-85 |
| 1,109 | DeLisha Milton, 1993-97 |
| 1,105 | Vanessa Hayden, 2000-04 |
| 998 | LaTonya McGhee, 1989-93 |
| 884 | Keturah Bell, 1982-86 |
| 884 | Cheryl Fisher, 1977-81 |
| 854 | Marsha Dotson, 2005-09 |
| 830 | Merlakia Jones, 1992-95 |
| 777 | Rhvonja Smith, 1987-91 |
| 712 | Naomi Mobley, 1998-01 |
| 664 | Tamara Stocks, 1997-01 |

active leader:
568 Jennifer George, 2009-present

Rebound Average

| | |
|------|----------------------------|
| 16.5 | Cindy Kline, 1976-77 |
| 12.9 | Quientella Bonner, 1976-81 |
| 10.3 | Vanessa Hayden, 2000-04 |
| 10.3 | Tammy Jackson, 1981-85 |
| 9.8 | Murriel Page, 1994-98 |
| 9.2 | LaTonya McGhee, 1989-93 |
| 8.9 | DeLisha Milton, 1993-97 |
| 8.5 | Cheryl Fisher, 1977-80 |
| 8.2 | Pam Stone, 1981-83 |
| 7.9 | Naomi Mobley, 1998-01 |
| 7.8 | Keturah Bell, 1982-86 |
| 7.5 | Bernice Mosby, 2002-05 |
| 7.1 | Rhvonja Smith, 1987-91 |

active leader:
6.4 Jennifer George, 2009-present

Field Goals Made

| | |
|-----|----------------------------|
| 855 | Merlakia Jones, 1992-95 |
| 816 | Tammy Jackson, 1981-85 |
| 796 | Quientella Bonner, 1976-81 |
| 790 | Murriel Page, 1994-98 |
| 747 | DeLisha Milton, 1993-97 |
| 660 | Keturah Bell, 1982-86 |
| 645 | Vanessa Hayden, 2000-04 |
| 620 | Tonya Washington, 1997-00 |
| 598 | Marsha Dotson, 2005-09 |
| 589 | Sha Brooks, 2005-09 |
| 579 | Tiffany Travis, 1996-00 |
| 558 | LaTonya McGhee, 1989-93 |
| 548 | Rhvonja Smith, 1987-91 |
| 543 | Brandi McCain, 1998-02 |
| 538 | Cheryl Fisher, 1977-81 |
| 503 | Tamara Stocks, 1997-01 |
| 456 | Jana Bragg, 1984-88 |

active leader:
295 Jennifer George, 2009-present

Field Goal Attempts

| | |
|-------|----------------------------|
| 1,770 | Merlakia Jones, 1992-95 |
| 1,613 | Sha Brooks, 2005-09 |
| 1,481 | Quientella Bonner, 1976-81 |
| 1,475 | Brandi McCain, 1998-02 |
| 1,466 | Tammy Jackson, 1981-85 |
| 1,437 | Murriel Page, 1994-98 |
| 1,418 | DeLisha Milton, 1993-97 |
| 1,352 | Tonya Washington, 1997-00 |
| 1,335 | Keturah Bell, 1982-86 |
| 1,276 | Vanessa Hayden, 2000-04 |
| 1,271 | Tiffany Travis, 1996-00 |
| 1,249 | Cheryl Fisher, 1977-81 |
| 1,146 | LaTonya McGhee, 1989-93 |
| 1,108 | Rhvonja Smith, 1987-91 |
| 1,093 | Talatha Bingham, 1996-99 |
| 1,077 | Marsha Dotson, 2005-09 |
| 1,026 | Tamara Stocks, 1997-01 |
| 1,021 | Bernice Mosby, 2002-05 |
| 996 | Jana Bragg, 1984-88 |

active leader:
811 Jordan Jones, 2009-present

Field Goal Percentage (min. 350 att.)

| | |
|-------------|--|
| .557 | Tammy Jackson (816-1466), 1981-85 |
| .555 | Marsha Dotson (598-1077), 2005-09 |
| .552 | Jennifer George (295-534), 2009-pres. |
| .552 | Azania Stewart (282-511), 2008-pres. |
| .551 | Naomi Mobley (199-361), 1998-01 |
| .550 | Murriel Page (790-1437), 1994-98 |
| .538 | Terry Whitehead (282-524), 1981-83 |
| .537 | Quientella Bonner (796-1481), 1976-81 |
| .527 | DeLisha Milton (747-1418), 1993-97 |
| | Lisa Webb (166-315), 1983-87 |
| .526 | Hollis Hindes (276-525), 1981-85 |
| .521 | Robin Mathis, 1986-88 |
| .516 | Lisa Born (222-430), 1986-88 |
| .505 | Vanessa Hayden (645-1276), 2000-04 |
| .490 | Tamara Stocks (503-1026), 1997-01 |

Three-Point FG Made

| | |
|------------|------------------------------------|
| 246 | Talatha Bingham, 1995-99 |
| 230 | Brandi McCain, 1998-02 |
| 212 | Sha Brooks, 2005-09 |
| 174 | Jordan Jones, 2009-present |
| 161 | Steffi Sorensen, 2008-10 |
| 142 | Dana Smith, 1994-98 |
| 125 | Tamia Williams, 2001-05 |
| 109 | Kerry Cremeans, 1990-94 |
| 106 | Bridget Pettis, 1991-93 |
| 87 | Depree Bowden, 2004-08 |
| 80 | Sharielle Smith, 2006-10 |
| 80 | Danielle Santos, 2002-06 |
| 77 | Amanda Butler, 1990-94 |
| 75 | Sarah Lowe, 2002-06 |
| 73 | Tonya Washington, 1997-00 |
| 72 | Kim Dye, 2003-07 |
| 71 | Tashia Morehead, 2003-05 |
| 70 | Jaterra Bonds, 2010-present |
| 69 | Lonnika Thompson, 2007-10 |
| 69 | Takilya Davis, 1991-95 |
| 65 | Jennifer Mossor, 2006-10 |

Three-Point FG Att.

| | |
|------------|-----------------------------------|
| 794 | Talatha Bingham, 1995-99 |
| 710 | Brandi McCain, 1998-02 |
| 703 | Sha Brooks, 2005-09 |
| 524 | Jordan Jones, 2009-present |
| 435 | Dana Smith, 1994-98 |
| 432 | Steffi Sorensen, 2008-10 |
| 374 | Kerry Cremeans, 1990-94 |
| 370 | Tamia Williams, 2001-05 |
| 339 | Bridget Pettis, 1991-93 |
| 298 | Depree Bowden, 2004-08 |
| 278 | Amanda Butler, 1990-94 |
| 265 | Danielle Santos, 2002-06 |
| 259 | Takilya Davis, 1991-95 |
| 252 | Sarah Lowe, 2002-06 |
| 244 | Jaterra Bonds, 2010-pres. |
| 237 | Sharielle Smith, 2006-10 |
| 223 | Jennifer Mossor, 2006-10 |
| 213 | Tashia Morehead, 2003-05 |
| 203 | Tonya Washington, 1997-00 |
| 142 | Tara Taylor, 2002-04 |
| 133 | Sophia Witherspoon, 1988-91 |
| 125 | Merlakia Jones, 1991-95 |
| 121 | Chanda Stebbins, 1993-97 |
| 111 | Tiffany Travis, 1996-00 |
| 105 | Tombi Bell, 1997-01 |

Three-Point FG% (min. 70 made)

| | |
|-------------|---|
| .373 | Steffi Sorensen (161-432), 2008-10 |
| .360 | Tonya Washington (73-203), 1997-00 |
| .338 | Tamia Williams (125-370), 2001-05 |
| .338 | Sharielle Smith (80-237), 2006-10 |
| .333 | Tashia Morehead (71-213), 2003-05 |
| .332 | Jordan Jones (174-524), 2009-pres. |
| .326 | Dana Smith (142-435), 1994-98 |
| .324 | Brandi McCain (230-710), 1998-02 |
| .321 | Kim Dye (72-224), 2003-07 |

| | |
|------|------------------------------------|
| .313 | Bridget Pettis (106-339), 1991-93 |
| .310 | Talatha Bingham (246-794), 1995-99 |
| .302 | Sha Brooks (212-703), 2005-09 |
| .302 | Danielle Santos (80-265), 2002-06 |
| .298 | Sarah Lowe (75-252), 2002-06 |
| .292 | Depree Bowden (87-298), 2004-08 |
| .291 | Kerry Cremeans (109-374), 1990-94 |
| .277 | Amanda Butler (77-278), 1990-94 |

Free Throws Made

| | |
|-----|-----------------------------|
| 430 | Sha Brooks, 2005-09 |
| 364 | DeLisha Milton, 1993-97 |
| 343 | Tamara Stocks, 1997-01 |
| 334 | Murriel Page, 1994-98 |
| 333 | Marsha Dotson, 2005-09 |
| 299 | Rhvonja Smith, 1987-91 |
| 292 | Tiffany Travis, 1996-00 |
| 286 | Vanessa Hayden, 2000-04 |
| 274 | Tombi Bell, 1997-01 |
| 268 | Sophia Witherspoon, 1988-91 |
| 264 | Brandi McCain, 1998-02 |
| 263 | Tammy Jackson, 1981-85 |
| 260 | Merlakia Jones, 1991-95 |
| 245 | Rhvonja Smith, 1987-91 |
| 230 | LaTonya McGhee, 1989-93 |
| 223 | Dalila Eshe, 2002-06 |
| 219 | Bernice Mosby, 2002-05 |
| 218 | Naomi Mobley, 1998-01 |
| 211 | Keturah Bell, 1982-86 |

active leader:
147 Jordan Jones, 2009-present

Free Throw Attempts

| | |
|-----|-----------------------------|
| 550 | Sha Brooks, 2005-09 |
| 543 | Murriel Page, 1994-98 |
| 536 | DeLisha Milton, 1993-97 |
| 500 | Vanessa Hayden, 2000-04 |
| 499 | Marsha Dotson, 2005-09 |
| 479 | Tamara Stocks, 1997-01 |
| 474 | Rhvonja Smith, 1987-91 |
| 469 | Sophia Witherspoon, 1987-91 |
| 466 | Tammy Jackson, 1981-85 |
| 408 | Tombi Bell, 1997-01 |
| 392 | Tiffany Travis, 1996-00 |
| 383 | LaTonya McGhee, 1989-93 |
| 371 | Merlakia Jones, 1991-95 |
| 359 | Erika Lang, 1988-92 |
| 353 | Keturah Bell, 1982-86 |

active leader:
261 Jennifer George, 2009-present

Free Throw Percentage (minimum 80 FT made)

| | |
|-------------|---|
| .821 | Sharielle Smith (192-234), 2006-10 |
| .820 | Roonie Scovel (82-100), 1980-83 |
| .802 | Dalila Eshe (223-278), 2002-06 |
| .790 | Terry Whitehead (162-205), 1981-83 |
| .788 | Brandi McCain (264-335), 1998-02 |
| .782 | Sha Brooks (430-550), 2005-09 |
| .782 | Danielle Santos (129-165), 2002-06 |
| .776 | Camille Rattledge (90-116), 1986-90 |
| .766 | Jordan Jones (147-192), 2009-pres. |
| .762 | Sarah Lowe (192-252), 2002-06 |
| .753 | Tashia Morehead (128-170), 2003-05 |
| .750 | Jana Bragg (153-204), 1984-88 |
| .745 | Tiffany Travis (292-392), 1997-00 |
| .739 | Kerry Cremeans (88-119), 1990-94 |
| .735 | Tishona Gregory (133-181), 2001-05 |
| .723 | Depree Bowden (180-249), 2004-08 |
| .721 | Dianne Duffy (111-154), 1977-81 |

Assists

| | |
|-----|----------------------------|
| 816 | Camille Rattledge, 1986-90 |
| 568 | Brandi McCain, 1998-02 |
| 497 | Mahogany Hudson, 1994-98 |
| 431 | Tombi Bell, 1999-01 |
| 401 | Amanda Butler, 1990-94 |
| 376 | Sarah Lowe, 2002-06 |
| 371 | Susan Stoddard, 1983-87 |
| 368 | Dana Smith, 1994-98 |
| 365 | Sha Brooks, 2005-09 |
| 360 | Roonie Scovel, 1980-84 |
| 298 | Jana Bragg, 1984-88 |
| 265 | Danielle Santos, 2002-06 |
| 255 | Sandra Wilson, 1980-83 |
| 226 | Crystal Parker, 1992-96 |
| 216 | Sharlene Byrd, 1982-86 |
| 214 | Tishona Gregory, 2001-05 |

active leader:
189 Lanita Bartley, 2010-present

Blocks

| | |
|------------|--------------------------------------|
| 357 | Vanessa Hayden, 2000-04 |
| 230 | Quientella Bonner, 1976-81 |
| 185 | Azania Stewart, 2008-present |
| 172 | DeLisha Milton, 1993-97 |
| 160 | Keturah Bell, 1982-86 |
| 121 | Tammy Jackson, 1981-85 |
| 119 | Jennifer George, 2009-present |
| 110 | Aneika Henry, 2007-09 |

| | |
|----|-------------------------|
| 88 | LaTonya McGhee, 1989-93 |
| 87 | Tamara Stocks, 1998-01 |
| 75 | Naomi Mobley, 1998-01 |
| 58 | Dalila Eshe, 2002-06 |
| 55 | Murriel Page, 1994-98 |
| 50 | Lisa Born, 1986-87 |
| 50 | Rhvonja Smith, 1987-91 |
| 45 | Erika Lang, 1988-92 |
| 41 | Bernice Mosby, 2002-05 |
| 37 | Pam Stone, 1981-83 |

Steals

| | |
|-----|-----------------------------|
| 281 | DeLisha Milton, 1993-97 |
| 273 | Brandi McCain, 1998-02 |
| 242 | Sha Brooks, 2005-09 |
| 234 | Camille Rattledge, 1986-90 |
| 216 | Tammy Jackson, 1981-85 |
| 212 | Mahogany Hudson, 1994-98 |
| 193 | Merlakia Jones, 1991-95 |
| 192 | Rhvonja Smith, 1987-91 |
| 191 | Tombi Bell, 1997-01 |
| 185 | Depree Bowden, 2004-08 |
| 183 | Dana Smith, 1994-98 |
| 176 | Sarah Lowe, 2002-06 |
| 162 | Danielle Santos, 2002-06 |
| 156 | Sophia Witherspoon, 1988-91 |
| 150 | Susan Stoddard, 1983-87 |
| 148 | Sharlene Byrd, 1982-86 |
| 147 | Lonnika Thompson, 2007-10 |
| 133 | Tiffany Travis, 1996-00 |

active leader:
99 Jordan Jones, 2009-present

Minutes Played

| | |
|------|-------------------------------------|
| 3987 | Murriel Page, 1994-98 (128 GP) |
| 3882 | Sha Brooks, 2005-09 (126 GP) |
| 3726 | Dana Smith, 1994-98 (125 GP) |
| 3726 | Talatha Bingham, 1995-99 (128 GP) |
| 3529 | Brandi McCain, 1998-02 (106 GP) |
| 3515 | Camille Rattledge, 1986-90 (109 GP) |
| 3378 | DeLisha Milton, 1993-97 (125 GP) |
| 3337 | Sarah Lowe, 2002-06 (115 GP) |
| 3196 | Mahogany Hudson, 1994-98 (119 GP) |
| 3039 | Sharielle Smith, 2006-10 (125 GP) |
| 3022 | Tamara Stocks, 1997-01 (129 GP) |

active leader:
2609 Jordan Jones, 2009-present (86 GP)

Games Played

| | |
|-----|---------------------------|
| 129 | Tamara Stocks, 1997-01 |
| 128 | Murriel Page, 1994-98 |
| 128 | Talatha Bingham, 1996-99 |
| 126 | Sha Brooks, 2005-09 |
| 126 | Marsha Dotson, 2005-09 |
| 125 | Sharielle Smith, 2006-10 |
| 125 | DeLisha Milton, 1993-97 |
| 125 | Dana Smith, 1994-98 |
| 120 | Depree Bowden, 2004-08 |
| 120 | Crystal Parker, 1992-96 |
| 119 | Mahogany Hudson, 1994-98 |
| 118 | Kelly Freeman, 1996-00 |
| 118 | Monique Cardenas, 1998-02 |

active leader:
116 Nddi Madu, 2007-present

Consecutive Games Started

| | |
|-----|--|
| 123 | Sha Brooks, 2005-09 (started 125 total) |
| 109 | Murriel Page, 1994-98 (started 111 total, final 109 of career) |
| 76 | Talatha Bingham, 1996-99 (started 115 total, final 76 of career) |
| 66 | Dana Smith, 1994-98 (107 total) |
| 66 | Camille Rattledge, 1986-90 (101 total) |
| 63 | Steffi Sorensen, 2008-10 (63 total) |
| 60 | Tamara Stocks, 1997-01 (124 total, final 38 of career) |

active leader:
22 Jaterra Bonds, 2010-present (35 of 56 total)

Games Started

| | |
|-----|----------------------------|
| 125 | Sha Brooks, 2005-09 |
| 124 | Tamara Stocks, 1997-01 |
| 116 | DeLisha Milton, 1993-97 |
| 115 | Talatha Bingham, 1996-99 |
| 111 | Murriel Page, 1994-98 |
| 107 | Dana Smith, 1994-98 |
| 102 | Mahogany Hudson, 1994-98 |
| 101 | Camille Rattledge, 1986-90 |

active leader:
81 Jordan Jones, 2009-present

Boldface indicates member of 2011-12 team

*Jordan Jones had 1,045 career points entering the 2011-12 season, with 626 points coming at UF and 419 at South Carolina. Her other stats reflect only her UF totals/averages



2011-12 University of Florida Gator Basketball Roster

Numerical Roster

| No. | Name | POS | CL | EX | HT | Hometown (High School/Last School) |
|-----|------------------------|-----|-------|----|------|---|
| 3 | Lanita Bartley | G | Sr. | 1L | 5-6 | Jacksonville, Fla. (Santa Fe College/Lee) |
| 4 | Carlie Needles | G | Fr. | HS | 5-6 | Highlands Ranch, Col. (ThunderRidge) |
| 10 | Jaterra Bonds | G | So. | 1L | 5-7 | Gainesville, Fla. (P.K. Yonge) |
| 12 | Deana Allen | G | Sr. | 1L | 5-9 | Houma, La. (Pensacola JC/Ellender Memorial) |
| 13 | Azania Stewart | C | Sr. | 3L | 6-4 | Wood Green, England (Notre Dame (Va.) Academy) |
| 14 | Ndidi Madu | F | R-Sr. | 3L | 6-1 | Antioch, Tenn. (McGavock) |
| 15 | Viktorija Dimaite | C | Fr. | HS | 6-4 | Panevezys, Lithuania (The Rock (Fla.) School) |
| 20 | Andrea Vilaró Aragonés | G/F | Fr. | HS | 5-10 | Barcelona, Spain (IES Joaquin Blume) |
| 22 | Kayla Lewis | G | So. | 1L | 5-11 | Decatur, Ga. (Southwest DeKalb) |
| 23 | Brittany Shine | G | So. | 1L | 5-10 | Sacramento, Calif. (Sacramento) |
| 31 | Lily Svete | F | R-So. | 1L | 6-2 | Granger, Ind. (Penn) |
| 32 | Jennifer George | F | Jr. | 2L | 6-0 | Orlando, Fla. (Bishop Moore) |
| 33 | Jordan Jones | G | R-Sr. | 3L | 5-9 | Suwanee, Ga. (Collins Hill/Univ. of South Carolina) |

Alphabetical Roster

| No. | Name | POS | CL | EX | HT | Hometown (High School/Last School) |
|-----|------------------------|-----|-------|----|------|---|
| 12 | Deana Allen | G | Sr. | 1L | 5-9 | Houma, La. (Pensacola JC/Ellender Memorial) |
| 3 | Lanita Bartley | G | Sr. | 1L | 5-6 | Jacksonville, Fla. (Santa Fe College/Lee) |
| 10 | Jaterra Bonds | G | So. | 1L | 5-7 | Gainesville, Fla. (P.K. Yonge) |
| 15 | Viktorija Dimaite | C | Fr. | HS | 6-4 | Panevezys, Lithuania (The Rock (Fla.) School) |
| 32 | Jennifer George | F | Jr. | 2L | 6-0 | Orlando, Fla. (Bishop Moore) |
| 33 | Jordan Jones | G | R-Sr. | 3L | 5-9 | Suwanee, Ga. (Collins Hill/Univ. of South Carolina) |
| 22 | Kayla Lewis | G | So. | 1L | 5-11 | Decatur, Ga. (Southwest DeKalb) |
| 14 | Ndidi Madu | F | R-Sr. | 3L | 6-1 | Antioch, Tenn. (McGavock) |
| 4 | Carlie Needles | G | Fr. | HS | 5-6 | Highlands Ranch, Col. (ThunderRidge) |
| 23 | Brittany Shine | G | So. | 1L | 5-10 | Sacramento, Calif. (Sacramento) |
| 13 | Azania Stewart | C | Sr. | 3L | 6-4 | Wood Green, England (Notre Dame (Va.) Academy) |
| 31 | Lily Svete | F | R-So. | 1L | 6-2 | Granger, Ind. (Penn) |
| 20 | Andrea Vilaró Aragonés | G/F | Fr. | HS | 5-10 | Barcelona, Spain (IES Joaquin Blume) |

Coaching Staff

Head Coach: Amanda Butler (Florida: B.S. 1995, Master's 1997)

Assistant Coaches: Brenda Mock Kirkpatrick (Wake Forest: B.A. 2000, Master's 2001)
David Lowery (Mississippi State, B.S. 2000)
Murriel Page (Florida, B.S. 1998)

Support Staff

Asst. to the Head Coach: Janna Magette (Davidson, B.A. 2002; Florida: Master's 2010)

Video Coordinator: Edwina Johnson (Montevallo, 2004)

Strength & Conditioning Coordinator: Rich Jacobs (Ball State, B.S. 2000; M.S. Michigan State 2007)

Athletic Trainer: John "JB" Barrett (Mississippi State, 1997, Master's 1999)

Academic Advisor: Judy Traveis (Florida: B.S. 1993, Master's 1999)

Communications: Kathy Cafazzo (Penn State, B.S. 1993)

Managers: Daniel Barber (Head Manager), Jalesa Carzell, Kayla Lee

Athletic Training Student: Morgan Williams

Video Assistants: Pat Jenkins, Travis Kwok

Geographic Breakdown

California (1)

Brittany Shine – Sacramento

Colorado (1)

Carlie Needles – Highlands Ranch

Florida (3)

Lanita Bartley – Jacksonville
Jaterra Bonds – Gainesville
Jennifer George – Orlando

Georgia (2)

Jordan Jones – Suwanee
Kayla Lewis – Decatur

Indiana (1)

Lily Svete – Granger

Louisiana (1)

Deana Allen – Houma

Tennessee (1)

Ndidi Madu – Antioch

England (1)

Azania Stewart – Wood Green

Lithuania (1)

Viktorija Dimaite – Panevezys

Spain (1)

Andrea Vilaró Aragonés – Barcelona

Eligibility Breakdown

Seniors (5)

Deana Allen
Lanita Bartley
Jordan Jones
Ndidi Madu
Azania Stewart

Sophomores (4)

Jaterra Bonds
Kayla Lewis
Brittany Shine
Lily Svete

Juniors (1)

Jennifer George

Freshmen (3)

Viktorija Dimaite
Carlie Needles
Andrea Vilaró Aragonés

Pronunciation Guide:

JATERRA Bondsja-TEAR-ah
VIKTORIJA DIMAITE.....Victoria dee-uh-MON-tae
NDIDI MADUDe-De muh-DUE
AZANIA Stewart.....ah-ZANE-ee-ah
Lily SVETEss-VET-ee
ANDREA VILARÓ ARAGONESon-DREY-uh
.....vil-R-oh air-uh-GO-ness

David LOWERYLOW (rhymes with
.....NOW)-ree

JANNA MAGETTE.....JAN-uh muh-JETT
Judy TRAVEIS.....Travis

2011-12 FLORIDA GATORS



#3

Lanita Bartley
G * Sr. * 5-6 * Jacksonville, Fla.



#4

Carlie Needles
G * Fr. * 5-6 * Highlands Ranch, Colo.



#10

Jaterra Bonds
G * So. * 5-7 * Gainesville, Fla.



#12

Deana Allen
G * Sr. * 5-9 * Houma, La.



#13

Azania Stewart
C * Sr. * 6-4 * Wood Green, England



#14

Nndidi Madu
F * R-Sr. * 6-1 * Antioch, Tenn.



#15

Viktorija Dimaite
C * Fr. * 6-4 * Panevezys, Lithuania



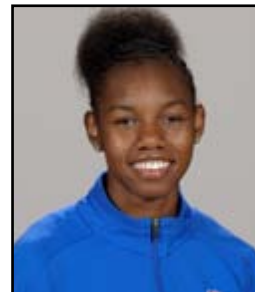
#20

Andrea Vilaró Aragonés
G/F * Fr. * 5-10 * Barcelona, Spain



#22

Kayla Lewis
G * So. * 5-11 * Decatur, Ga.



#23

Brittany Shine
G * So. * 5-10 * Sacramento, Calif.



#31

Lily Svete
F * R-So. * 6-2 * Granger, Ind.



#32

Jennifer George
F * Jr. * 6-0 * Orlando, Fla.



#33

Jordan Jones
G * R-Sr. * 5-9 * Suwanee, Ga.

Pronunciation Guide:

JATERRA Bondsja-TEAR-ah
 VIKTORIJA DIMAITE.....Victoria dee-uh-MON-tae
 Panevezyspah-nyeah-V-jeezzs
 NDIDI MADUDe-De muh-DUE
 AZANIA Stewart.....ah-ZANE-ee-ah
 Lily SVETEss-VET-ee
 ANDREA VILARÓ ARAGONESon-DREY-uh
vil-R-oh air-uh-GO-ness

David LOWERYLOW (rhymes with NOW)-ree



Amanda Butler
Head Coach
Fifth Year at UF; Seventh Overall



Brenda Mock Kirkpatrick
Assistant Coach
Fifth Year at UF



David Lowery
Assistant Coach
Fifth Year at UF



Murriel Page
Assistant Coach
Second Year at UF as Coach



Did You Know?

The color version of the Gator logo changed during the 2011 summer. The green under the Gator's jaw is no longer light green. The same color green is used throughout.